

Region: Cambodia\_Sendai - [kh2] Profile:

Select what profile you want:

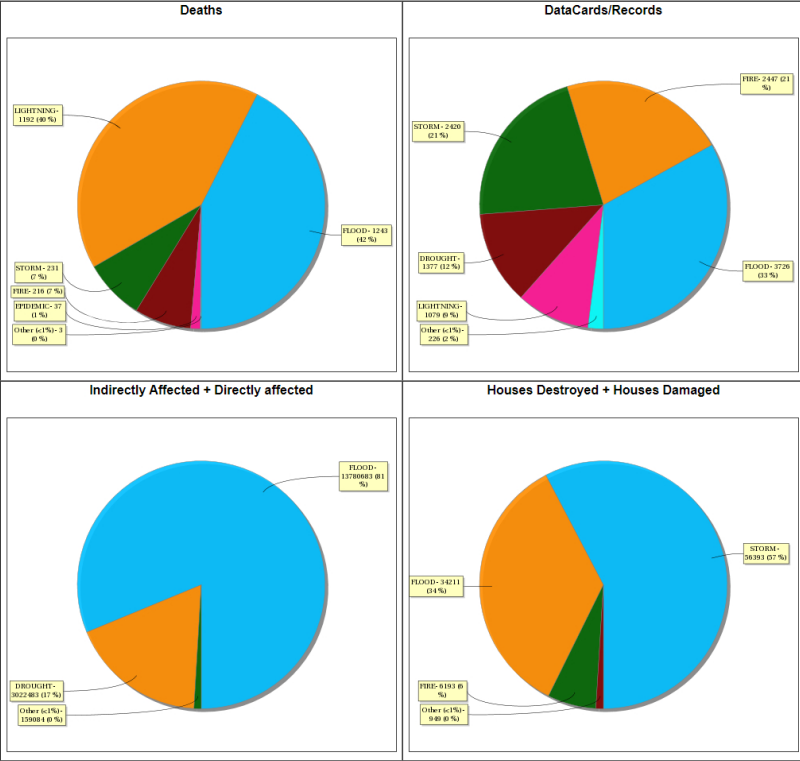
Disaster type: Multi-hazard profile Province: ALL

Cambodia\_Sendai

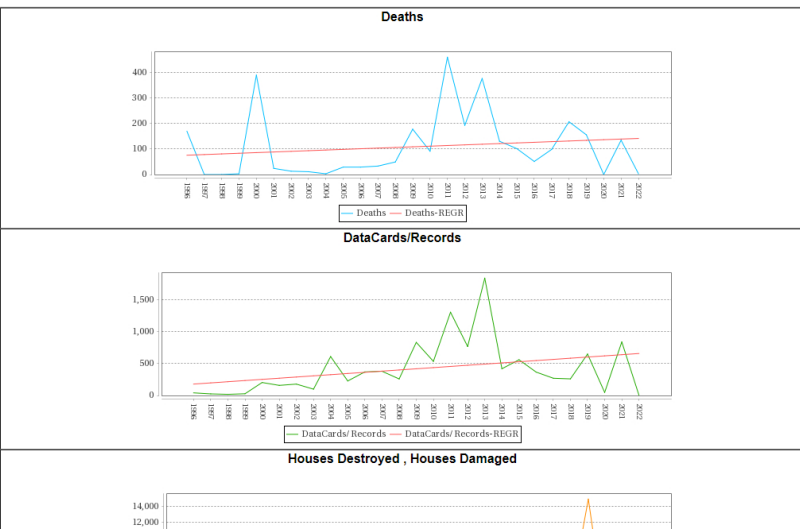
Profile:

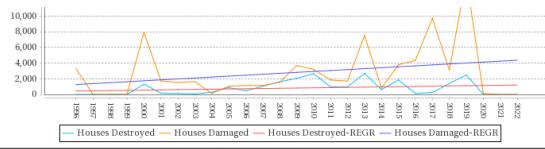
This Country Profile shows a set of typical results known as "Preliminary Analysis" coming from the disaster database. Charts, Maps and tables below will provide you with a basic understanding of the effects of many types of disasters occurred in the region. [Click here for more info](#) Download CamDi Disaster Data Analysis - English  
Download CamDi User Manual - Khmer | English

Composition of Disasters

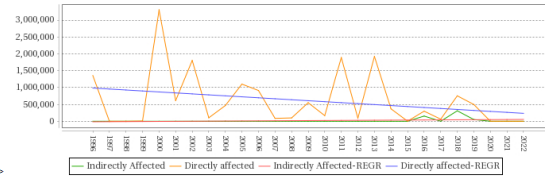


Temporal Behaviour

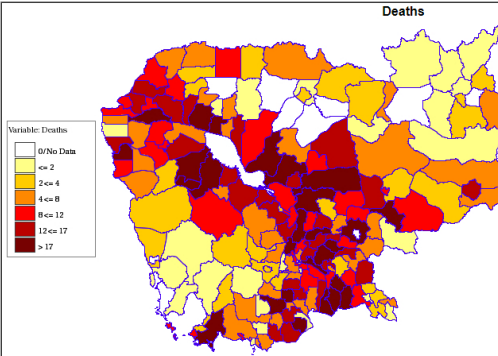




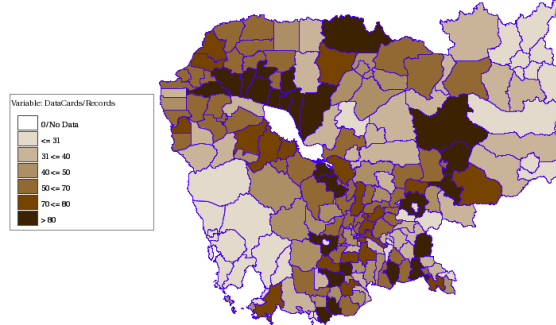
Indirectly Affected, Directly affected



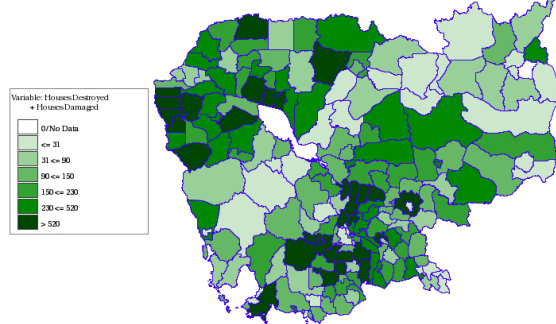
Spatial Distribution



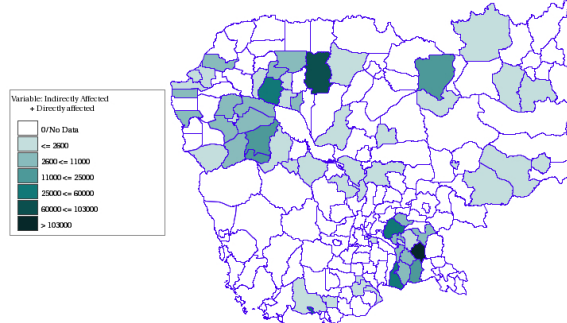
DataCards/Records



Houses Destroyed + Houses Damaged



Indirectly Affected + Directly affected



Statistics

Event	DataCards	Records	Deaths	Injured	Missing	Houses Destroyed	Houses Damaged	Indirectly Affected	Directly Affected	Relocated	Evacuated	Losses \$USD	Losses \$Local	Education centers	Hospitals	Damages in crops Ha	Lost Cattle	Damages in roads Kms	
DROUGHT	1377							204050	281843						11		1033482	1154	1112
EPIDEMIC	57	37							10										
FIRE	2447	210	281			5513	975	9	38035			69	180000		1		270	8	
FLOOD	3728	1243	1115	2		2401	31810	307590	13473087	17188		756188		647	1839	2059785	24683	6258737	
LIGHTNING	1078	1162	858	1		39	189	36	2252						1		552	458	
PEST OUTBREAK	102								2378										
RIVER BANK COLLAPSE	87	3	2			199	528		1222	694	48								1870
STORM	2420	231	854	2		13787	42638	1718	113417						75	39	5458	74	210

**Spatial Distribution** get it as Excel

Geography	Code	DataCards	Records	Deaths	Injured	Missing	Houses Destroyed	Houses Damaged	Indirectly Affected	Directly Affected	Relocated	Evacuated	Losses \$USD	Losses \$Local	Education centers	Hospitals	Damages in crops Ha	Lost Cattle	Damages in roads Kms	
Banteay Meanchey	01	859	139	88			872	3030	4430	834051	16241	74536			345	22	338905	31	937189	
Battambang	02	771	244	198	2		2888	9982	88114	987147	2	50144			16	1	521880	20	505882	
Kampong Cham	03	888	370	870			2148	7871		188187	546	107990			87	26	204179	3916	751436	
Kampong Chhnang	04	585	62	91			525	827	440	271841		24798			13	1	74868	21	50234	
Kampong Speu	05	498	39	41			301	8702		1718754		11718	80000		83		102484	148	188880	
Kampong Thum	06	334	163	151			449	3081	3	578161		21281	120000		48	2	125378	144	788548	
Kampot	07	519	75	27			281	2771	36483	1473440		85682			2	34	75494	68	77255	
Kandal	08	832	214	711			2278	8172		2324122	847	79445			1	16	153228	100	846800	
Kep	23	42	7	21			50	330		2277		2727			1		12	4	8500	
Koh Kong	09	159	20	17			211	1428		83797		1854			1		8141	32	244	
Kratie	10	585	130	81			415	4739	813	879289	503	49799			126	13	107124	1927	874590	
Mondul Kiri	11	148	37	41			198	278	2	14856		450					33084	6	4682	
Oddar Meanchey	22	310	47	52			1044	2351		134258		8542			14		52008	4	480288	
Palin	24	174	45	27	1		587	1742		70882		2311			4		28580	10	141008	
Phnom Penh	12	440	52	102			1145	1128	8233	328838		4770			22	3	4854		2400	
Preah Vihear	16	181	88	85			290	1008		14109		841					1701	3	18888	
Preah Vihear	13	498	21	22			888	2007	1	279831		85463			5		83079	1511	318893	
Prey Veng	14	847	389	250			1392	5894	289883	2380195	38	85483			202	1751	400822	9	885353	
Pursat	15	342	120	86			224	222	21	428022		5188			3		187883	352	81722	
Ratanak Kiri	18	192	41	19			170	1181	2	418631		22703			6	3	75412	2880	108818	
Sihanoukville	17	1372	180	858			4083	2814	104887	548737		27244			16	1	104402	729	987188	
Stung Treng	19	237	20	18			49	1594	13228	447773		53179			46	3	82831	87	387748	
Svay Rieng	20	480	209	90			889	3283		731059		20483			30		136448	68	181784	
Takeo	21	629	209	80	2		1099	8880	9	99744		888			10		208290	244	18248	
Totals																				

**Temporal Behaviour** get it as Excel

Year	DataCards	Records	Deaths	Injured	Missing	Houses Destroyed	Houses Damaged	Indirectly Affected	Directly Affected	Relocated	Evacuated	Losses \$USD	Losses \$Local	Education centers	Hospitals	Damages in crops Ha	Lost Cattle	Damages in roads Kms	
1999	41	159	2					3289	1357295						181		284129		
1997	25																9878		
1998	10																2582		
1999	27	3				1	2	7849			875						8978		
2000	203	388	748	2		1305	7920	3305648			80599			44		874230	844	545194	
2001	158	24				187	1725	611710			12889			4		104308	12	59734	
2002	178	10	7			129	1822	1803837			88204					105888	20	24122	
2003	89	11				47	1839	1022480			1488					86384		848	
2004	408	3	25			288	123	458972			1848					832088	8	3180	
2005	227	29	3			874	1058	1101978	5	3888						4777	8384	88021	
2006	369	26	8			459	1138	811888			1292			10		38888	889	78181	
2007	379	33	21			1040	1136	89228	413							82234	3921	193823	
2008	289	49	18			1808	1841	88521			1722			1		49723	8	3322	
2009	831	177	179			2052	3870	549590	374	49133				8		170279	2886	868308	
2010	534	91	90			2838	3180	188431	10280	7418				147	8	84024	28	891885	
2011	1303	458	131			863	1838	1880178	218	188102				178	20	389191	1116	264888	
2012	798	192	107			887	1703	88884			8080			108	34	81803	86	21019	
2013	1838	378	139			2884	7839	1821802	29	181887				18	27	208013	850	1874917	
2014	418	130	103			814	808	1388024	170	38347				20		38881	7	41988	
2015	889	101	128			1840	3782	48	2880			1	120000			41010	1173	8788	
2016	369	51	91	1		129	4344	183648	288884		180					41010	1173	8788	
2017	270	88	102			240	8718	81388	13	7834				1		21188	8011	142848	
2018	280	208	471			1398	3112	358882	784000	70	88128	88000		128	1772	187284	230	588410	
2019	848	158	312	2		2477	14850	82332	488888	402	59782			194	18	138478	137	822479	
2020									9	115								2	
2021		838	134	37														180	
2022		6	3																

**Cambodia\_Sendai**

总结:  
 数据卡: 11275  
 记录: 1998 - 2022  
**死亡人数:**  
 FLOOD: 1243 死亡人口: 3728 数据卡  
 LIGHTNING: 1162 死亡人口: 1079 数据卡  
 STORM: 231 死亡人口: 2420 数据卡  
**房屋损失:**  
 FLOOD: 34111 房屋: 3728 数据卡  
 FIRE: 8193 房屋: 2447 数据卡

