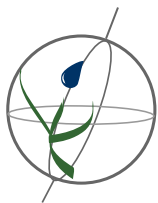


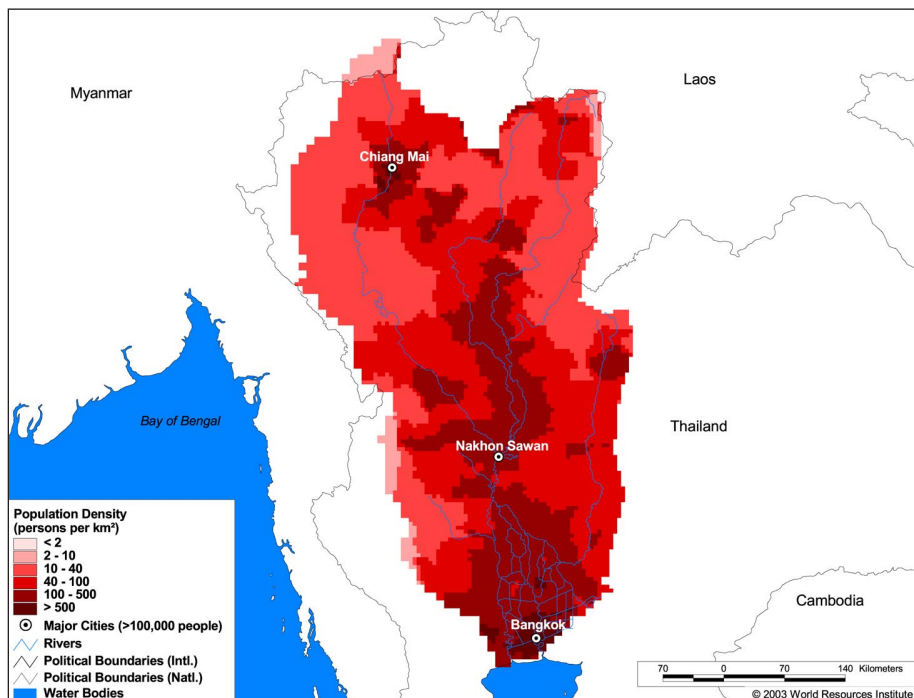
Land Cover and Use Variables

| | |
|---|------|
| Percent Forest Cover: | 35.4 |
| Percent Grassland, Savanna and Shrubland: | 11.1 |
| Percent Wetlands: | 8.4 |
| Percent Cropland: | 44.7 |
| Percent Irrigated Cropland: | 12.5 |
| Percent Dryland Area: | 15.7 |
| Percent Urban and Industrial Area: | 9.2 |
| Percent Loss of Original Forest Cover: | 77.3 |



Basin Indicators

| | |
|---|---------|
| Basin Area (sq. km): | 178,785 |
| Average Population Density (people per sq. km): | 119 |
| Number of Large Cities (>100,000 people): | 3 |
| Water Supply per Person (1995)(m ³ /year): | 1,237 |
| Degree of River Fragmentation: | High |
| Number of Dams (>15m high) in Basin: | 3 |
| Number of Dams (>150m high) in Basin: | - |
| Number of Dams (>60m high) under Construction: | 0 |
| Number of Dams (>15m high) on Main Stem of River: | 1 |
| Number of Dams (>150m high) on Main Stem of River: | 0 |



Biodiversity Information and Indicators

| | |
|-----------------------------------|------|
| Number of Fish Species: | 222 |
| Number of Fish Endemics: | 34 |
| Number of Amphibian Species: | 78 |
| Number of Ramsar Sites: | 0 |
| Number of Wetland-Dependent IBAs: | - |
| Number of Endemic Bird Areas: | 0 |
| Percent Protected Area: | 11.7 |

