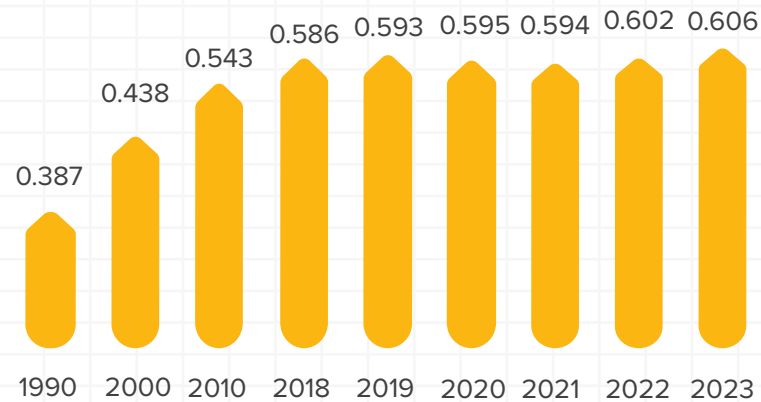




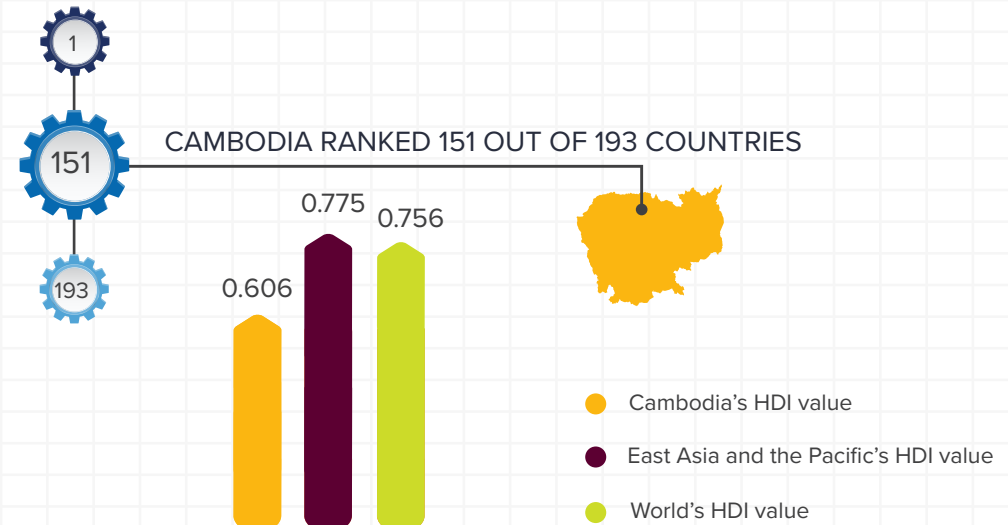
# CAMBODIA 2025 HUMAN DEVELOPMENT STATUS



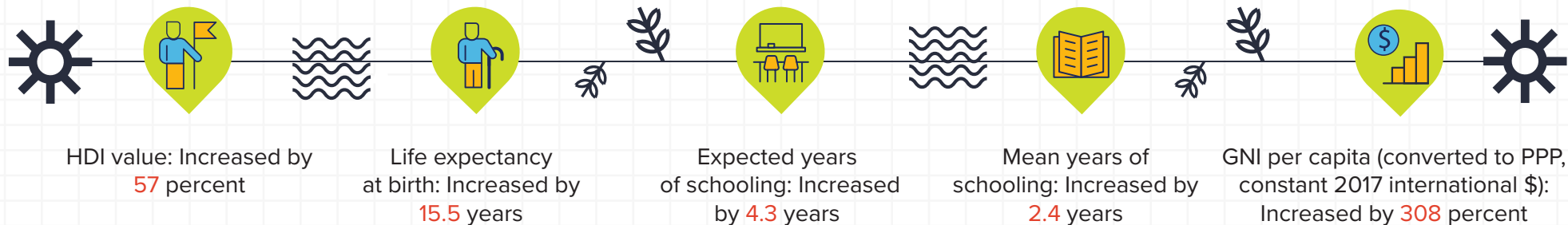
## Cambodia's HDI Value (1990-2023)



## Cambodia's HDI Compared to Regional and World Benchmarks (2023)



## Cambodia's progress (1990-2023)



**HUMAN DEVELOPMENT INDEX:** The HDI is a summary measure for assessing long-term progress in three basic dimensions of human development: a long and healthy life, access to knowledge and a decent standard of living.

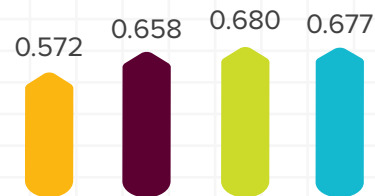
**GNI PER CAPITA, PPP (CONSTANT 2017 INTERNATIONAL DOLLARS),** refers to gross national income (GNI) converted to international dollars using purchasing power parity (PPP) rates. One international dollar has the same purchasing power over GNI as a U.S. dollar has within the United States. This standardization allows for more accurate comparisons of income and living standards across countries.



# CAMBODIA 2025 HUMAN DEVELOPMENT STATUS



Planetary pressures-adjusted Human Development Index 2023

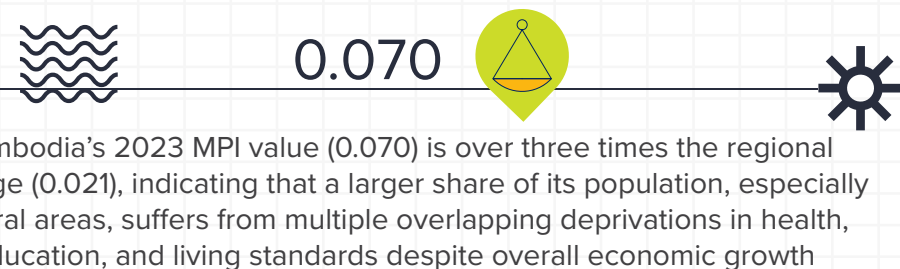
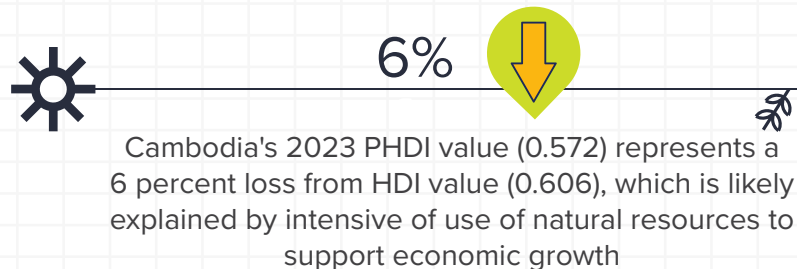


● Cambodia

● East Asia and the Pacific

● World average

● High human development average



**PLANETARY PRESSURES-ADJUSTED HUMAN DEVELOPMENT INDEX :** The PHDI adjusts the HDI for pressures on the planet to reflect a concern for intergenerational inequality. It is the level of human development adjusted by carbon dioxide emissions per person (production-based) and material footprint per capita to account for the excessive human pressure on the planet.

While Cambodia sees little adjustment in its HDI reflecting planetary pressures, along with other middle and low human development countries, much more can be done to ensure environmental sustainability, build stronger human security, and help future generations meet their needs.

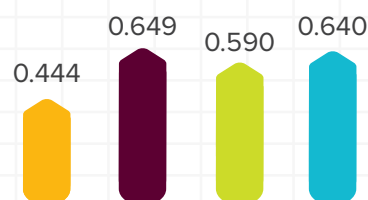
**MULTIDIMENSIONAL POVERTY INDEX :** The MPI looks beyond income and identifies multiple deprivations at the household level in three key dimensions: health, education and standard of living, comprising 10 indicators. People who experience deprivation in at least one third of these weighted indicators fall into the category of multidimensionally poor.



# CAMBODIA 2025 HUMAN DEVELOPMENT STATUS



Inequality Adjusted Human Development Index 2023

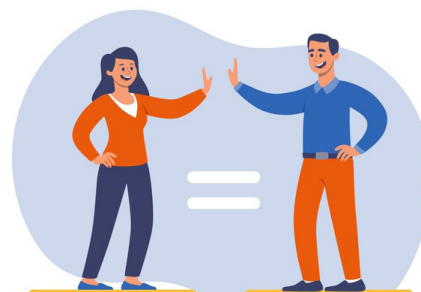


● Cambodia

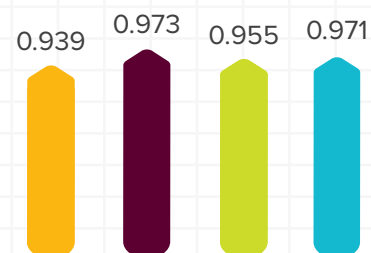
● East Asia and the Pacific

● World average

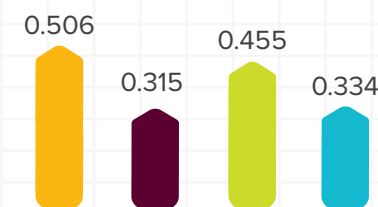
● High human development average



Gender Development Index 2023



Gender Inequality Index 2023



26.7%



Cambodia's 2023 IHD value (0.444) reflects a 26.7 percent loss from its HDI value (0.606), underscoring persistent post-COVID inequalities, with only a marginal improvement from the 26.9 percent loss recorded in 2022

0.939



Cambodia's 2023 GDI (0.939) remains below the regional average (0.973), but reflects gradual progress from 0.90 in 2012 and 0.92 in 2017, indicating steady but slow improvement in gender equality in human development outcomes



136



Cambodia's 2023 GII value (0.506) ranks the country at 136 out of 172 countries

**INEQUALITY ADJUSTED HUMAN DEVELOPMENT INDEX:** IHDI takes into account inequality in all three dimensions of the HDI by 'discounting' each dimension's average value according to its level of inequality. The IHDI is basically the HDI discounted for inequalities.

**GENDER DEVELOPMENT INDEX:** The GDI measures gender inequalities in achievement in three basic dimensions of human development: health, education and command over economic resources.

**GENDER INEQUALITY INDEX:** GII reflects gender-based inequalities in three dimensions – reproductive health, empowerment, and economic activity.

