



**វិទ្យាស្ថានបណ្តុះបណ្តាល និង ស្រាវជ្រាវដើម្បីអភិវឌ្ឍន៍កម្ពុជា**  
**CDRI—Cambodia’s leading independent  
development policy research institute**

**របាយការណ៍ខ្លីៗស្តីពីសេដ្ឋកិច្ចកម្ពុជា**  
**Flash Report on the Cambodian Economy**

កញ្ញា ២០១២ / September 2012

វត្ត វឌ្ឍនា / Roth Vathana

ប៉ុន ដូរីណា / Pon Dorina

បកប្រែដោយ៖ យូ សិទ្ធិវិទូ និង ខេង សេង

ភ្នំពេញ កម្ពុជា

**Phnom Penh, Cambodia**

**TO SUBSCRIBE, PLEASE CONTACT:**

*Office address:* #56, Street 315, Tuol Kork, Phnom Penh, Cambodia; *postal address:* CDRI, PO Box 622 Phnom Penh, Cambodia;  
*tel:* (855-23) 881-384/881-701/881-916/883-603 ; *fax:* (855-23) 880-734 ; *email:* [pubs@cdri.org.kh](mailto:pubs@cdri.org.kh); *website:* <http://www.cdri.org.kh>

**ការបកស្រាយតារាងសំខាន់ៗ**

**Highlights**

របាយការណ៍នេះ បកស្រាយពីសូចនាករសេដ្ឋកិច្ចមួយចំនួនរបស់កម្ពុជា និង បណ្តាប្រទេសជាដៃគូពាណិជ្ជកម្ម ដោយធ្វើការប្រៀបធៀបតួលេខក្នុងខែថ្មីៗ នេះ ជាមួយនឹងខែមុនៗ។

This report highlights a number of economic indicators of Cambodia and its partners. It compares recent figures with those of earlier periods.

ក្នុងត្រីមាសទី២ ឆ្នាំ២០១២ វិនិយោគគិតជាទ្រព្យសកម្មជាប់លាប់ខាង ឧស្សាហកម្មអនុម័តដោយ CDC ធ្លាក់ចុះ ១៦,៧% មកត្រឹម ១៧៣,៧លាន ដុល្លារ ធៀបនឹងត្រីមាសមុន ឬធ្លាក់ចុះ ៣២,៤% ធៀបនឹងមួយឆ្នាំមុន។

Fixed asset investments in industry approved by the Council for the Development of Cambodia in the second quarter of 2012 decreased by 16.7 percent from a quarter earlier or 32.4 percent year on year, to USD173.7 m.

ក្នុងខែកក្កដា ចំនួនភ្ញៀវបរទេសមកដល់សរុបកើន ១៣% ធៀបនឹងខែមុន ឬកើន ១៩% ធៀបនឹងមួយឆ្នាំមុន។ ភ្ញៀវមកលំហែកើន ១៣,០% (១៥,០% ធៀបនឹងមួយឆ្នាំមុន) មកធ្វើជំនួញកើន ១២,០% (១៧,០% ធៀបនឹងមួយឆ្នាំ មុន) និងមកក្នុងបំណងផ្សេងៗកើន ៣០% (៣៨១% ធៀបនឹងមួយឆ្នាំមុន)។

In July, total foreign visitor arrivals increased by 13 percent from the preceding month (19.0 percent year on year). Holiday arrivals rose by 13 percent (15 percent year on year), business arrivals by 12 percent (17 percent year on year) and “other” arrivals by 30 percent (381 percent year on year).

នៅខែកក្កដា តម្លៃអនុម័តគម្រោងសាងសង់ភូមិគ្រឹះនិងផ្ទះ កើន ៧៩៦,៥% (១៥,៥% ធៀបមួយឆ្នាំមុន) ដល់ ១២,៨លានដុល្លារ គម្រោងផ្សេងៗកើន ៨០៧,២% (១៧៣,២% ធៀបនឹងមួយឆ្នាំមុន) ដល់ ៣៤,១លានដុល្លារ។ តម្លៃអនុម័តគម្រោងសាងសង់ផ្ទះល្វែង កើន ៣០៣% ធៀបនឹងខែមុន ប៉ុន្តែធ្លាក់ចុះ ៤៨,១% ធៀបនឹងមួយឆ្នាំមុន មកត្រឹម ២៩,៤លានដុល្លារ។

In July, the value of construction approvals for villas and houses rose by 796.5 percent (15.5 percent year on year) to USD12.8 m and of “others” by 807.2 percent (173.2 percent year on year) to USD34.1 m. The value of flat construction approvals rose 303 percent from a month earlier, but year on year decrease by 48.1 percent to USD29.4 m.

នៅខែមិថុនា សន្ទស្សន៍ថ្លៃទំនិញប្រើប្រាស់ (គ្រប់មុខទំនិញ) កើន ០,១% ធៀបនឹងខែមុន (១,៨% ធៀបនឹងខែដូចគ្នាឆ្នាំមុន)។ ថ្លៃស្បៀងអាហារ និង ភេសជ្ជៈគ្មានជាតិស្រាវកើន ០,៩% (៣,២% ធៀបនឹងមួយឆ្នាំមុន) សម្លៀក បំពាក់និងស្បែកជើងកើន ០,៥% (៣,៨% ធៀបនឹងមួយឆ្នាំមុន) និង ថ្លៃ សម្ភារៈបំពាក់និងថ្លៃដំណើរការក្នុងផ្ទះកើន ០,៣% (៣,៦% ធៀបនឹង មួយឆ្នាំមុន)។ ក្នុងខែដដែល ថ្លៃស្នាក់នៅ និងថ្លៃទឹកភ្លើងធ្លាក់ចុះ ០,៨% ប៉ុន្តែកើន ០,៦% ធៀបនឹងមួយឆ្នាំមុន។

In June, the consumer price index (all items) went up 0.1 percent from the preceding month (1.8 percent from the same period last year). Prices of food and non-alcoholic beverages rose by 0.9 percent (3.2 percent year on year), clothing and footwear by 0.5 percent (3.8 percent year on year) and household furnishings and operations by 0.3 percent (3.6 percent year on year). In the same month, housing and utilities prices dropped by 0.8 percent, but increased 0.6 percent year on year.

នៅខែសីហា ថ្លៃប្រេងសាំង កើន ៧,៦% ធៀបនឹងខែមុន (២,៩% ធៀប នឹងមួយឆ្នាំមុន) ដល់ ៥៣៤១រៀល/លីត្រ និងប្រេងម៉ាស៊ូត កើន ៦,៦% (៣,៩% ធៀបនឹងមួយឆ្នាំមុន) ដល់ ៥០៥៧រៀល/លីត្រ។

In August, the price of gasoline increased by 7.6 percent from a month earlier (2.9 percent year on year) to KHR5341/litre and of diesel by 6.6 percent (3.9 percent year on year) to KHR5057/litre.

នៅខែមិថុនា អត្រាការប្រាក់លើបញ្ជីជាប្រាក់រៀលរយៈពេល១២ខែ គឺ ៥,៨% (ធ្លាក់ចុះ ០,៣ ឯកតាភាគរយធៀបនឹងខែមុន) ហើយសម្រាប់បញ្ជីជា ប្រាក់ដុល្លារ គឺ ៤,៤% (ធ្លាក់ចុះ ០,០៤ ឯកតាភាគរយ)។

In June, the interest rate on 12-month riel deposits was 5.8 percent (a 0.3 percentage point drop from a month earlier) and that of dollar deposits was 4.4 percent (a 0.04 percentage point decrease).

នៅខែសីហា ប្រាក់រៀលនៅទីផ្សារឡើងថ្លៃ ០,០២% ធៀបនឹងខែមុន (០,៦% ធៀបនឹងមួយឆ្នាំមុន) ទល់នឹងប្រាក់ដុល្លារ ប៉ុន្តែនៅថេរទល់នឹង ប្រាក់បាតថៃ និងប្រាក់ដុល្លារថៃ។

In August, the market exchange rate of the riel appreciated 0.02 percent (0.6 percent year on year) against the dollar. The riel exchange rate remained unchanged against the Thai baht and the Vietnamese dong.

នៅខែមិថុនា ការនាំចេញសម្លៀកបំពាក់ (គ្រប់ប្រភេទ) កើន ២៨,៤% ធៀបនឹងខែមុន (១៨,៦% ធៀបនឹងមួយឆ្នាំមុន) ដល់ ៤១១,២លានដុល្លារ ហើយការនាំចេញស្បែកជើង កើន ៦,៩% (២៣,៩% ធៀបនឹងមួយឆ្នាំមុន) ដល់ ២៧,៩លានដុល្លារ។ ការនាំចេញផលិតផលវាយនភ័ណ្ឌផ្សេងទៀតកើន ៣,៣% ដល់ ៥,៣លានដុល្លារ ប៉ុន្តែធ្លាក់ចុះ ៣,៥% ធៀបនឹងមួយឆ្នាំមុន។ ក្នុងខែដដែល ការនាំចូលដែកថែបកើន ២,៣% (២២៦,០% ធៀបនឹង មួយឆ្នាំមុន) ដល់ ១២,៥លានដុល្លារ ហើយការនាំចូលសម្ភារៈសំណង់ កើន ២២,១% (២០,៧% ធៀបនឹងមួយឆ្នាំមុន) ដល់ ៥,៥លានដុល្លារ រីឯ ការនាំចូលស៊ីម៉ង់ត៍ ធ្លាក់ចុះ ២៣,៤% ប៉ុន្តែកើន ១៧,៤% ធៀបនឹង មួយឆ្នាំមុន។ ការនាំចូលប្រេងសាំងកើន ៧,៨% ធៀបនឹងខែមុន (១០,៩% ធៀបនឹងមួយឆ្នាំមុន) ហើយការនាំចូលប្រេងម៉ាស៊ូតខ្មៅ កើន ៣,៦% (៦,៦% ធៀបនឹងមួយឆ្នាំមុន) រីឯការនាំចូលប្រេងម៉ាស៊ូតធ្លាក់ចុះ ១៣,៦% មកត្រឹម ៣៩,៥លានដុល្លារ ប៉ុន្តែកើន ០,៨% ធៀបនឹងមួយឆ្នាំមុន ។

Exports of clothing (all kinds) in June rose by 28.4 percent from the previous month (18.6 percent year on year) to USD411.2 m and shoes by 6.9 percent (23.9 percent year on year) to USD27.9 m. Exports of other textile products increased by 3.3 percent, but decreased by 3.5 percent year on year, to USD5.3 m. In the same month, imports of steel went up 2.3 percent (226.0 percent year on year) to USD12.5 m and construction equipment by 22.1 percent (20.7 percent year on year) to USD5.5 m. Imports of cement went down 23.4 percent, but increased 17.4 percent year on year. Imports of gasoline rose by 7.8 percent from a month earlier (10.9 percent year on year) and fuel oil by 3.6 percent (6.6 percent year on year). Imports of diesel oil dropped by 13.6 percent, but rose by 0.8 percent year

ក្នុងខែមិថុនា ចំណូលចរន្តសរុបរបស់រដ្ឋាភិបាល ធ្លាក់ចុះ ៧,៥% មកត្រឹម ៥៧២,៨ពាន់លានរៀល ធៀបនឹងខែមុន ប៉ុន្តែកើន ២៧,៩% ធៀបនឹងឆ្នាំមុន។ ចំណូលបានពីពន្ធនាំចូលនិងនាំចេញកើន ១០,៦% (១៩,២% ធៀបនឹងឆ្នាំមុន)។ ចំណូលពន្ធក្នុងស្រុក ធ្លាក់ចុះ ៧,៥% (កើន ៣៤,៨ ធៀបនឹងឆ្នាំមុន) ហើយ ចំណូលមិនមែនពន្ធ ធ្លាក់ចុះ ៣០,១% (កើន ៦,២% ធៀបនឹងឆ្នាំមុន)។ ក្នុងខែដដែល ចំណាយចរន្តសរុបរបស់រដ្ឋាភិបាល កើន ៧,២% ដល់ ៥៧៥,២ពាន់លានរៀល ប៉ុន្តែធ្លាក់ចុះ ៦,៣% ធៀបនឹងឆ្នាំមុន។ ចំណាយលើរបៀបរៀបរយ ធ្លាក់ចុះ ៣២,៥% (៩,៨% ធៀបនឹងឆ្នាំមុន) មកត្រឹម ២០៤,៥ពាន់លានរៀល រីឯឧបត្ថម្ភធន និងជំនួយសង្គមកិច្ចកើន ៩២,៧% ដល់ ១៨៣,៦ពាន់លានរៀល ប៉ុន្តែធ្លាក់ចុះ ២៦,៨% ធៀបនឹងមួយឆ្នាំមុន ។

នៅខែមិថុនា អង្ករថៃ ឡើងថ្លៃ ១៤,២% ធៀបនឹងខែមុន (៣២,០% ធៀបនឹងមួយឆ្នាំមុន) ដល់ ៧៣៧,៩ដុល្លារ/តោន។ កៅស៊ូ ធ្លាក់ថ្លៃ ៦,១% (២៩,២% ធៀបនឹងមួយឆ្នាំមុន) មកត្រឹម ៣១០៤,៩ដុល្លារ/តោន រីឯម្សៅដំឡូងឈើ ឡើងថ្លៃ ១២,២% ដល់ ៣៣៧,៥ដុល្លារ/តោន ប៉ុន្តែធ្លាក់ថ្លៃ ១៣,០% ធៀបនឹងមួយឆ្នាំមុន។ ការនាំចេញអង្ករនៅថៃ ធ្លាក់ចុះ ៣៩,៦% ធៀបនឹងខែមុន (៤៩,៣% ធៀបនឹងមួយឆ្នាំមុន) មកត្រឹម ៣០៦,២លានដុល្លារ ហើយការនាំចេញកៅស៊ូធម្មជាតិ និងជីវធម្មជាតិ ធ្លាក់ចុះ ៩,៤% (៣១,៥% ធៀបនឹងមួយឆ្នាំមុន) មកត្រឹម ៦៥៣,២លានដុល្លារ។ ការនាំចេញម្សៅដំឡូងឈើ ធ្លាក់ចុះ ៣៧,៤% មកត្រឹម ១២១,៣លានដុល្លារ ប៉ុន្តែកើន ២៧,៨% ធៀបនឹងមួយឆ្នាំមុន ។

នៅខែមិថុនា អង្ករនៅវៀតណាម ធ្លាក់ថ្លៃ ២,៧% ធៀបនឹងខែមុន (៩,១% ធៀបនឹងមួយឆ្នាំមុន) មកត្រឹម ៤៣៦,៧ដុល្លារ/តោន ហើយកៅស៊ូធ្លាក់ថ្លៃ ៩,៥% (៣៤,៩% ធៀបនឹងមួយឆ្នាំមុន) មកត្រឹម ២៨៣៣,៣ដុល្លារ/តោន រីឯគ្រាប់ស្វាយចន្ទី ឡើងថ្លៃ ៣,៤% ដល់ ៧០០០ដុល្លារ/តោន ប៉ុន្តែធ្លាក់ថ្លៃ ១៧,៣% ធៀបនឹងមួយឆ្នាំមុន។ ក្នុងខែដដែល ការនាំចេញអង្ករ កើន ១៥,៧% (១៩,៣% ធៀបនឹងមួយខែមុន) ដល់ ៣៨៣លានដុល្លារ ហើយគ្រាប់ស្វាយចន្ទី កើន ៣,៤% (២១,២% ធៀបនឹងមួយឆ្នាំមុន) ដល់ ១៥៤លានដុល្លារ រីឯការនាំចេញកៅស៊ូ ធ្លាក់ចុះ ២៧,៦% (៣០,៣% ធៀបនឹងមួយឆ្នាំមុន) មកត្រឹម ១៧០លានដុល្លារ។

នៅខែកក្កដា ការនាំចេញរបស់សហរដ្ឋអាមេរិក ធ្លាក់ចុះ ១,៤% មកត្រឹម ១៣០,៨ពាន់លានដុល្លារ ធៀបនឹងខែមុន ប៉ុន្តែកើន ៣,១% ធៀបនឹងមួយឆ្នាំមុន។ ការនាំចេញនៅតំបន់អឺរ៉ុប ធ្លាក់ចុះ ៥,៦% (៥,១% ធៀបនឹងមួយឆ្នាំមុន) មកត្រឹម ១៩១ពាន់លានដុល្លារ ហើយការនាំចេញរបស់ជប៉ុនធ្លាក់ចុះ ៦,១% (៧,១ ធៀបនឹងមួយឆ្នាំមុន) មកត្រឹម ៦៦,៨ពាន់លានរៀល។

នៅខែសីហា អង្ករ USA 2/4 ឡើងថ្លៃ ២,៣% ដល់ ៥៨៥ដុល្លារ/តោន ធៀបនឹងខែមុន ប៉ុន្តែធ្លាក់ថ្លៃ ៥,៥% ធៀបនឹងឆ្នាំមុន។ អង្ករ Thai 100% B ឡើងថ្លៃ ២,៩% (៣,៣% ធៀបនឹងមួយឆ្នាំមុន) ដល់ ៦០១ដុល្លារ/តោន។ ក្នុងខែដដែល សណ្តែកសៀង (US No.1) ឡើងថ្លៃ ១,១% (២៨,១% ធៀបនឹងមួយឆ្នាំមុន) ដល់ ៦៥៦,៦ដុល្លារ/តោន និង ពោត (US No.2) ឡើងថ្លៃ ១,២% (៧,៩% ធៀបនឹងមួយឆ្នាំមុន) ដល់ ៣៣១,២ដុល្លារ/តោន។ កៅស៊ូ (SMR 5) ធ្លាក់ថ្លៃ ៩,៧% ធៀបនឹងខែមុន (៤៣,១% ធៀបនឹងមួយឆ្នាំមុន) មកត្រឹម ២៦៦០,៨ដុល្លារ/តោន។ ក្នុងខែសីហា ប្រេងសាំង (US Gulf Coast) ឡើងថ្លៃ ១២,២% (៦,៣% ធៀបនឹងមួយឆ្នាំមុន) ដល់ ០,៧៨ដុល្លារ/លីត្រ ហើយប្រេងម៉ាស៊ូត (Low sulphur No2) ឡើងថ្លៃ ៩,១% (៥,៨% ធៀបនឹងមួយឆ្នាំមុន) ដល់ ០,៨៣ដុល្លារ/លីត្រ។

on year, to USD39.5 m.

In June, total government current revenue went down 7.5 percent from the preceding month but year on year increased by 27.9 percent, to KHR572.8 bn. Revenue from import and export taxes rose by 10.6 percent (19.2 percent year on year). Revenue from domestic taxes dropped by 7.5 percent (34.8 percent increase year on year) and from non-taxes by 30.1 percent (6.2 percent rise year on year). In the same period, total current expenditure increased by 7.2 percent but year on year dropped by 6.3 percent to KHR575.2 bn. Expenditure on wages went down 32.5 percent (9.8 percent year on year) to KHR204.5 bn, while that on subsidies and social assistance rose by 92.7 percent, but year on year decreased by 26.8 percent to KHR183.6 bn.

The price of Thai rice in June increased by 14.2 percent from a month earlier (32.0 percent year on year) to USD737.9/tonne. The price of rubber dropped by 6.1 percent (29.2 percent year on year) to USD3104.9/tonne. The price of tapioca went up 12.2 percent but year on year dropped by 13.0 percent to USD337.5/tonne. Exports of Thai rice went down 39.6 percent from the preceding month (49.3 percent year on year) to USD306.2 m and natural rubber and similar natural gums by 9.4 percent (31.5 percent drop year on year) to USD653.2 m. Exports of tapioca decreased by 37.4 percent, but year on year rose by 27.8 percent to USD121.3 m.

In June, rice prices in Vietnam decreased by 2.7 percent from the preceding month (9.1 percent year on year) to USD436.7/tonne and rubber by 9.5 percent (34.9 percent year on year) to USD2833.3/tonne. The price of cashew nuts rose by 3.4 percent but year on year dropped by 17.3 percent to USD7000/tonne. In the same period, exports of rice went up 15.7 percent (19.3 percent year on year) to USD383 m and cashew nuts by 3.4 percent (21.2 percent year on year) to USD154 m. Exports of rubber dropped by 27.6 percent (30.3 percent year on year) to USD170 m.

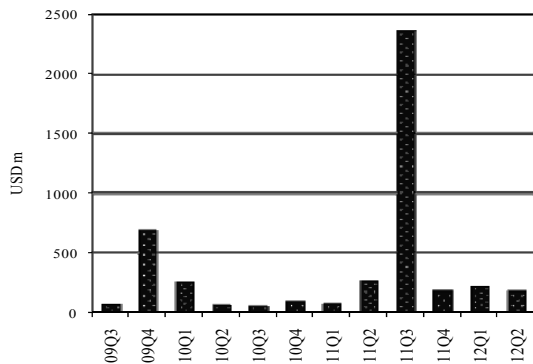
In July, US exports declined by 1.4 percent from a month earlier, but year on year increased by 3.1 percent to USD130.8 bn. Exports of the euro zone dropped 5.6 percent (5.1 percent year on year) to USD191 bn and of Japan by 6.1 percent (7.1 percent year on year) to USD66.8 bn.

In August, the price of USA 2/4 rice rose 2.3 percent from the preceding month, but year on year dropped by 5.5 percent, to USD585/tonne. Thai 100% B rice increased by 2.9 percent (3.3 percent year on year) to USD601/tonne. In the same month, the price of soybeans (US No. 1) rose 1.1 percent (28.1 percent year on year) to USD656.6/tonne and maize (US No. 2) by 1.2 percent (7.9 percent year on year) to USD331.2/tonne. The price of rubber (SMR 5) dropped by 9.7 percent from a month earlier (43.1 percent year on year) to USD2660.8/tonne. In August, the price of gasoline (US Gulf Coast) went up 12.2 percent (6.3 percent year on year) to USD0.78/litre and of diesel (low sulphur No. 2) by 9.1 percent (5.8 percent year on year) to USD0.83/litre.

**សកម្មភាពសេដ្ឋកិច្ចសំខាន់ៗ និង ថ្លៃទំនិញនៅកម្ពុជា**

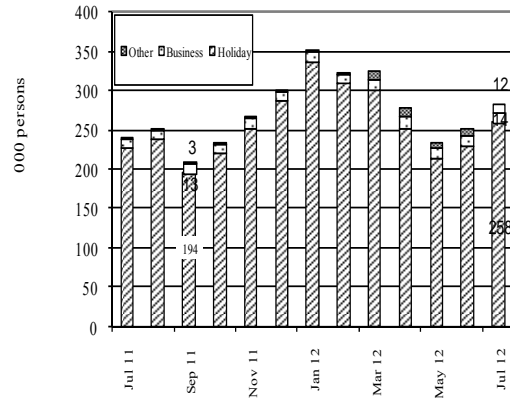
**Main Economic Activities and Consumer Prices in Cambodia**

**Fixed Asset Investment Approvals by CDC Industry**  
2009 Q2–2012 Q2



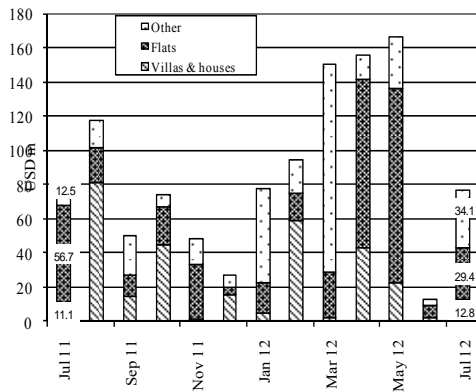
Including expansion projects.  
Source: Council for the Development of Cambodia

**Foreign Visitor Arrivals**  
July 2011–July 2012



Source: Ministry of Tourism

**Phnom Penh: Value of Construction Approvals**  
July 2011–July 2012

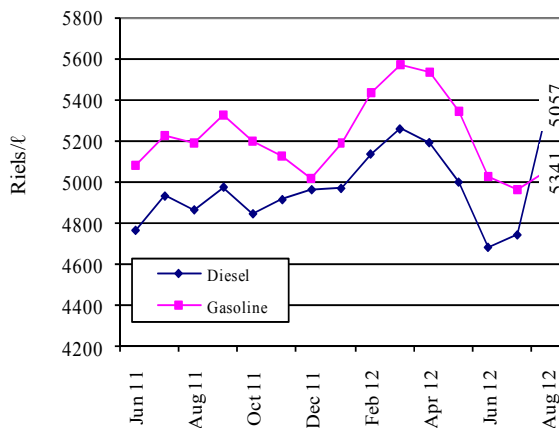


Source: Municipality of Phnom Penh

**Consumer Price Index**  
(December 2006=100)  
Dec 2010–June 2012

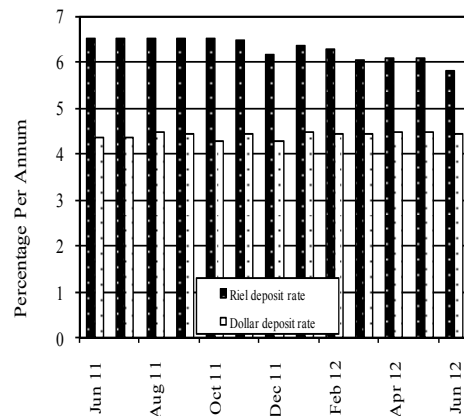
Source: National institute of statistics

**Phnom Penh: Gasoline & Diesel Prices**  
June 2011–August 2012



Source: CDRI

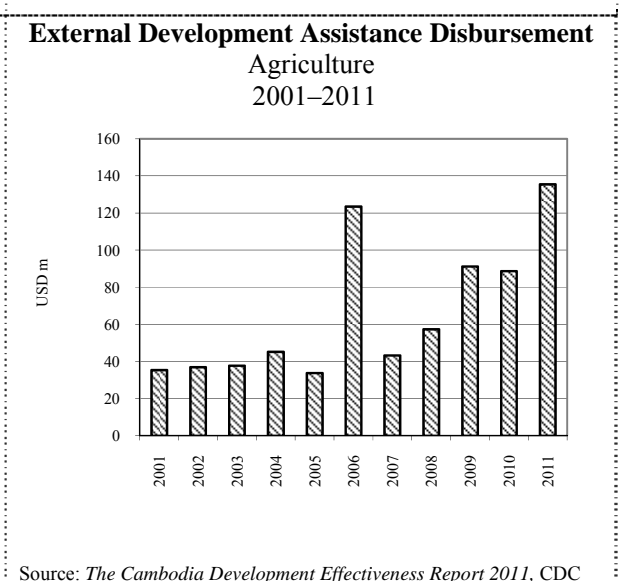
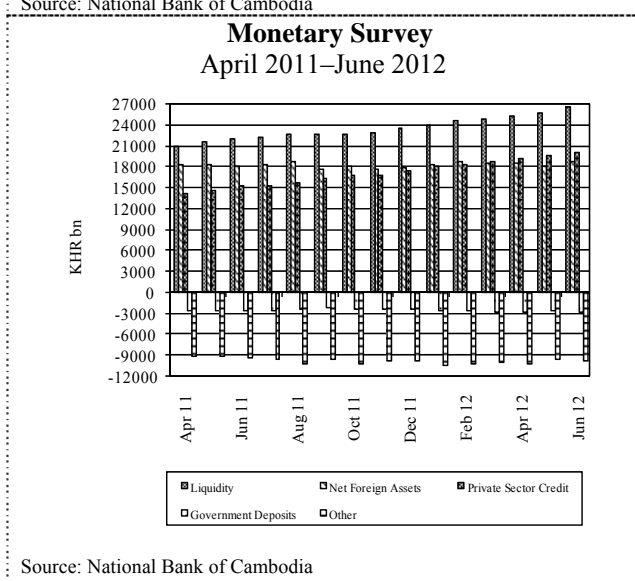
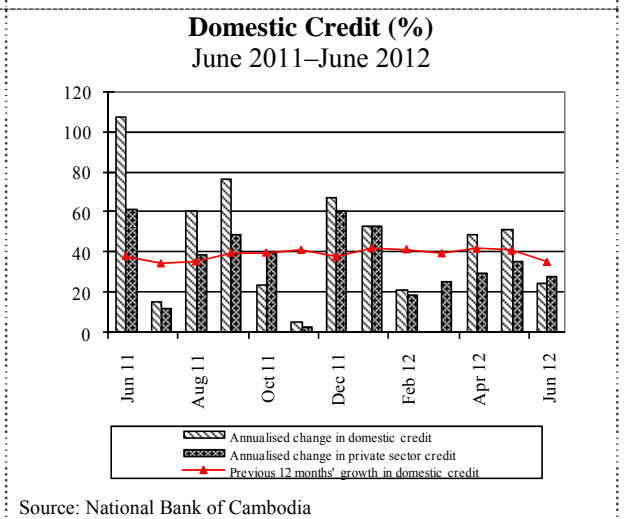
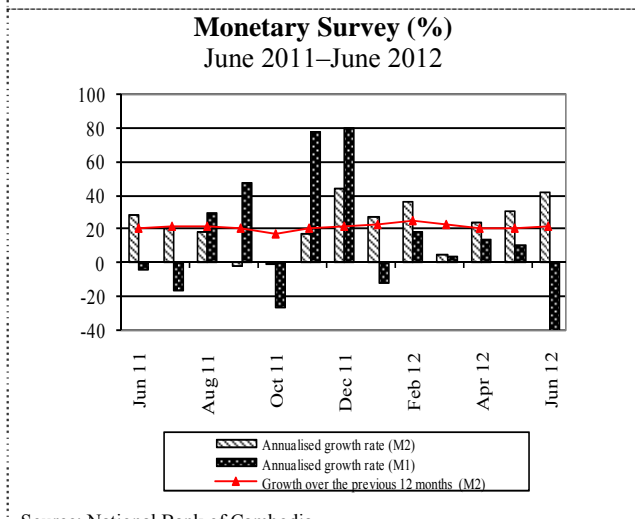
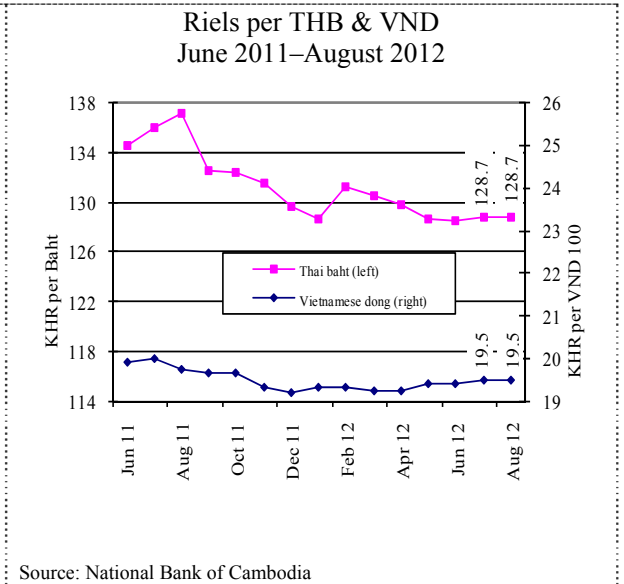
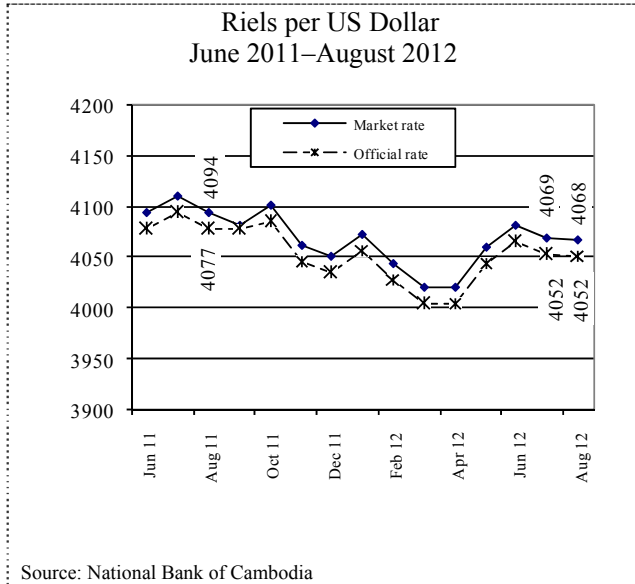
**Interest Rates on 12-Month Bank Deposits (%)**  
June 2011–June 2012



Source: Economic & Monetary Statistics, NBC

## ស្ថានភាពអត្រាប្តូរទ្រព្យ និង ជំនួយអភិវឌ្ឍន៍ពីក្រៅប្រទេស

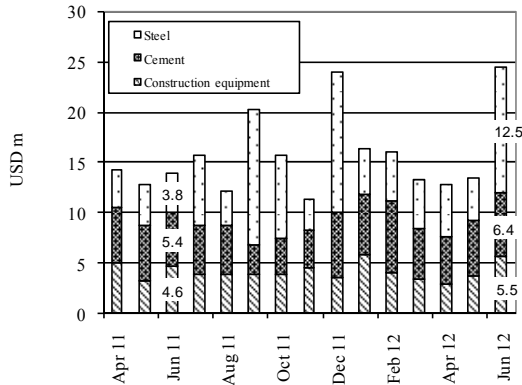
### Exchange Rates, Money and Credit



## ពាណិជ្ជកម្មក្រៅប្រទេស និង ការអនុវត្តថវិកាជាតិ

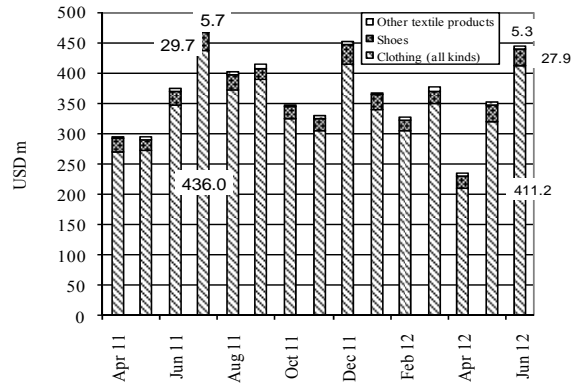
### External Trade and National Budget Operations

**Cambodian Imports**  
April 2011–June 2012



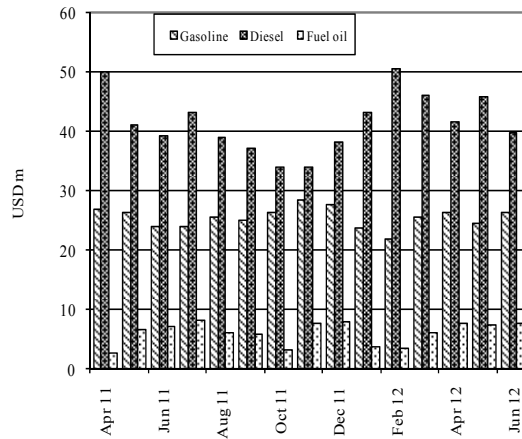
Source: Economic & Monetary Statistics, NBC

**Cambodian Exports**  
April 2011–June 2012



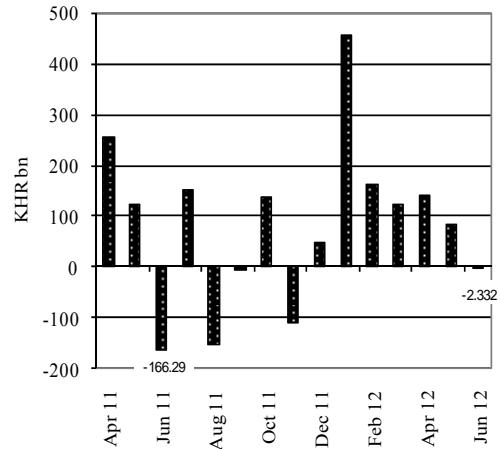
Source: Economic & Monetary Statistics, NBC

**Imports: Energy**  
April 2011–June 2012



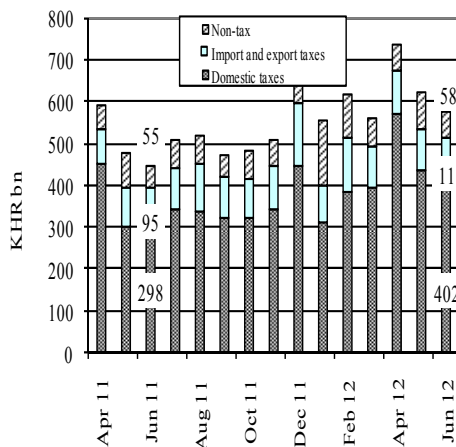
Source: Economic & Monetary Statistics, NBC

**Current Budget Operations**  
April 2011–June 2012



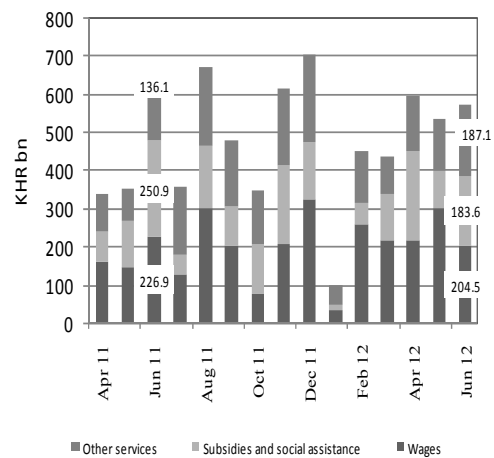
Source: MEF Bulletin

**Current Budget Revenue**  
April 2011–June 2012



Source: MEF Bulletin

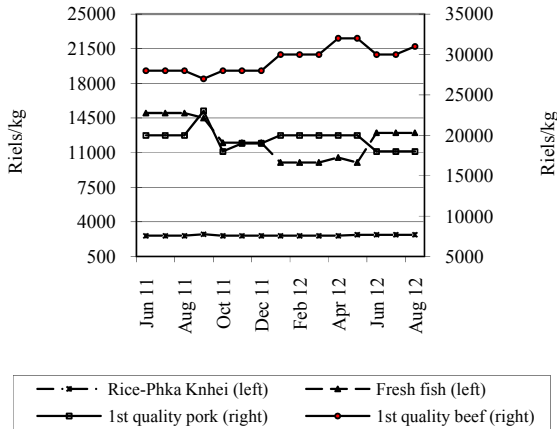
**Current Budget Expenditure**  
April 2011–June 2012



Source: MEF Bulletin

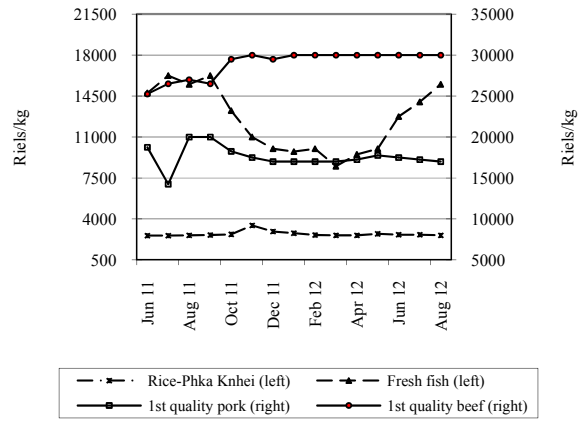
**ផ្លូវស្បៀងអាហារតាមខេត្តក្នុងប្រទេសកម្ពុជា**  
**Provincial Food Prices**

**Food Prices in Siem Reap Province**  
 June 2011–August 2012



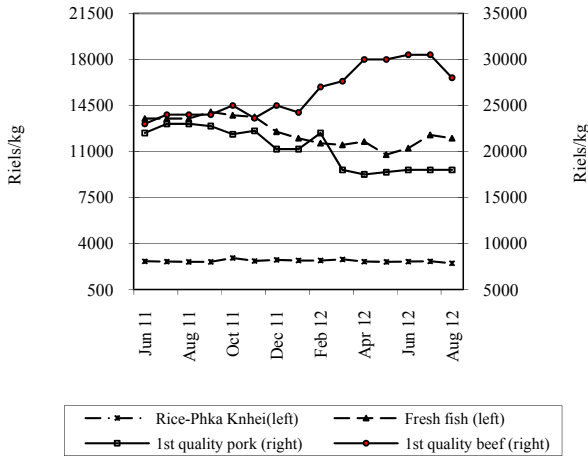
Source: CDRI

**Food Prices in Battambang Province**  
 June 2011–August 2012



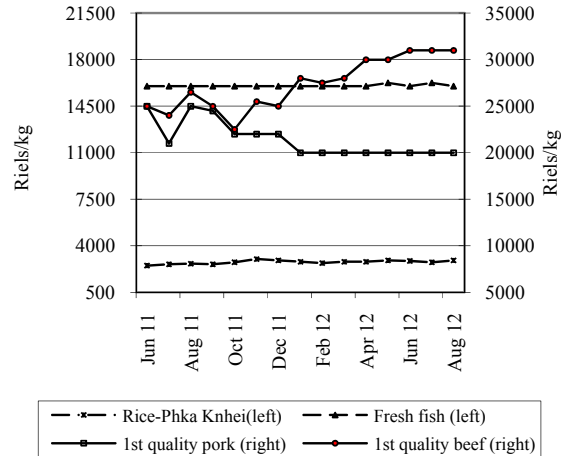
Source: CDRI

**Food Prices in Kompong Cham Province**  
 June 2011–August 2012



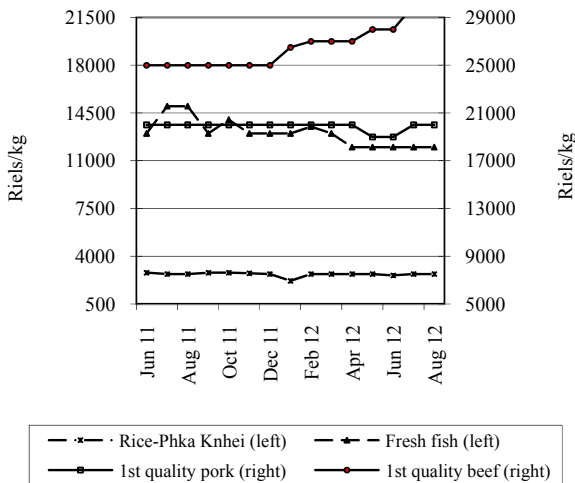
Source: CDRI

**Food Prices in Kampot Province**  
 June 2011–August 2012



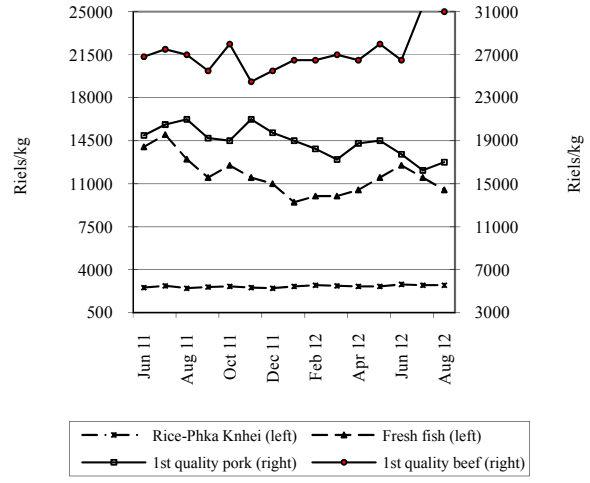
Source: CDRI

**Food Prices in Svay Rieng Province**  
 June 2011–August 2012



Source: CDRI

**Food Prices in Kompong Speu Province**  
 June 2011–August 2012

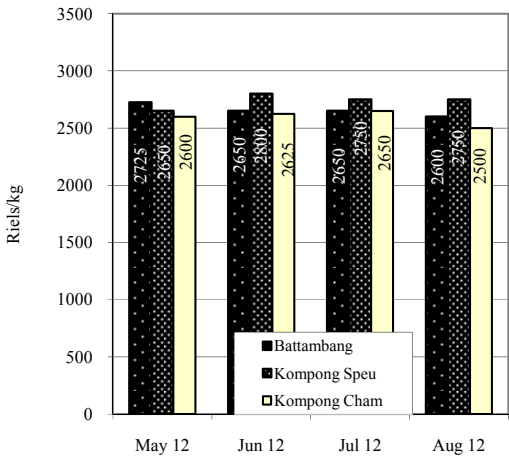


Source: CDRI



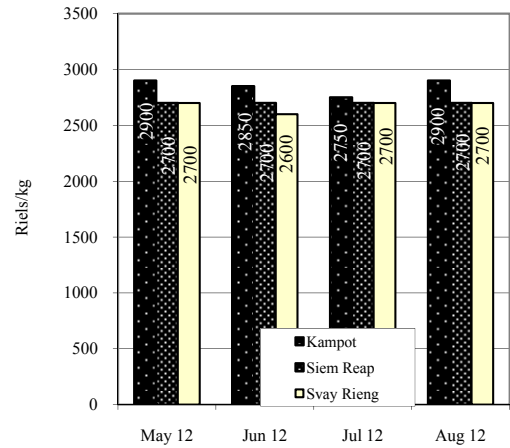
ផ្លូវដំណើរការតាមខេត្តក្នុងប្រទេសកម្ពុជា៖ តាមមូលដ្ឋានស្តីពី  
**Provincial Goods Prices in Cambodia**

**Cambodia: Rice Prices in Three Provinces**



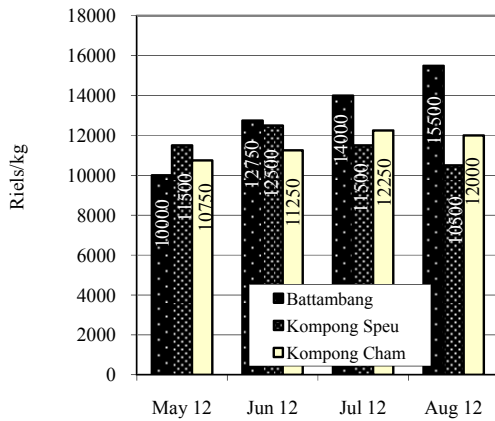
Source: CDRI

**Cambodia: Rice Prices in Three Provinces**



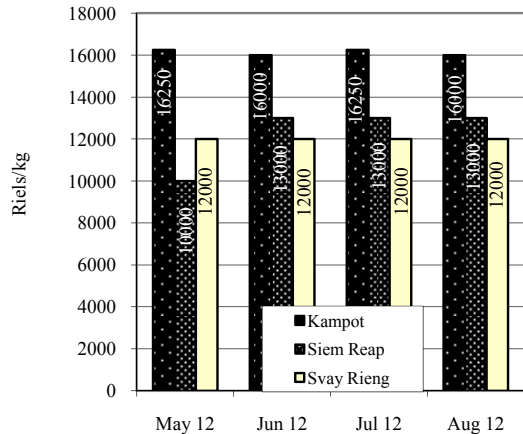
Source: CDRI

**Cambodia: Fish Prices in Three Provinces**



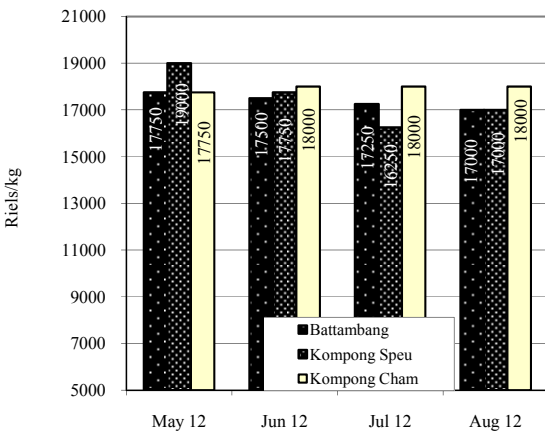
Source: CDRI

**Cambodia: Fish Prices in Three Provinces**



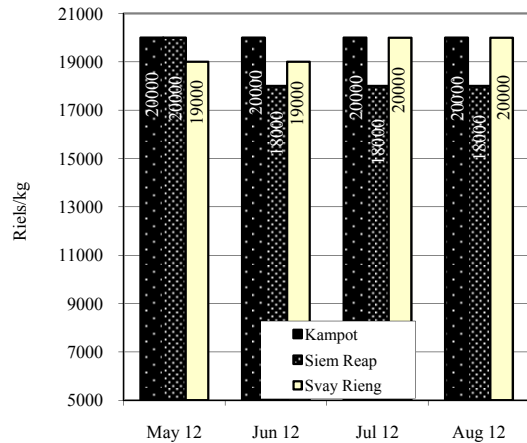
Source: CDRI

**Cambodia: Pork Prices in Three Provinces**



Source: CDRI

**Cambodia: Pork Prices in Three Provinces**

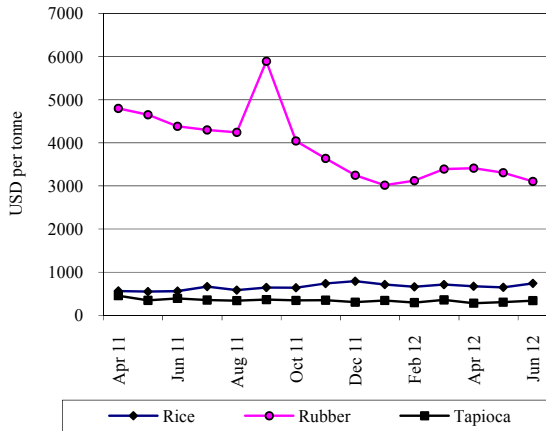


Source: CDRI



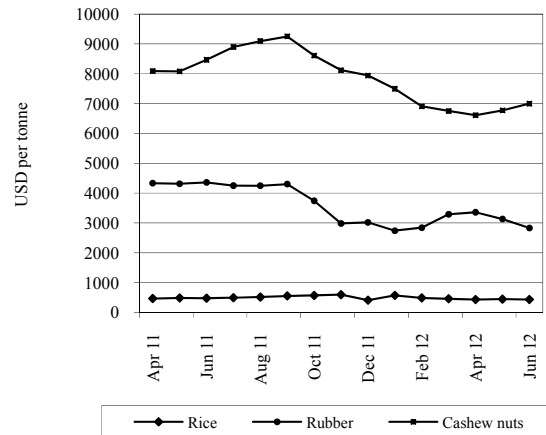
**ផ្ទៃទំនិញ ការសាំបញ្ជូ និង ចំនួនទេសចរអន្តរជាតិទៅក្នុងប្រទេសជាដៃគូរបស់កម្ពុជា**  
**Goods Prices, Exports and International Tourist Arrivals to Partners of Cambodia**

**Thailand: Prices of Rubber, Rice and Tapioca**  
April 2011–June 2012



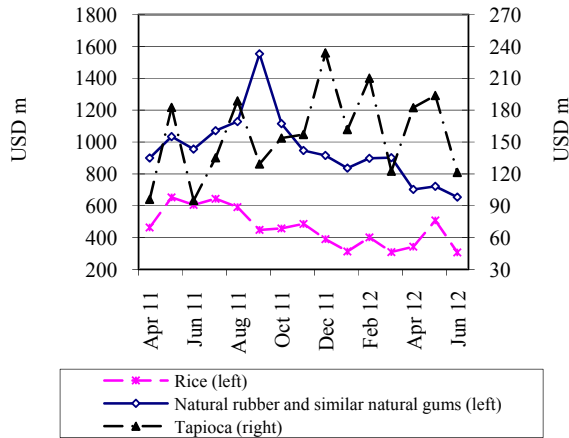
Source: Bank of Thailand, *Foreign Trade and Balance of Payments*

**Vietnam: Prices of Rubber, Rice and Cashew Nuts**  
April 2011–June 2012



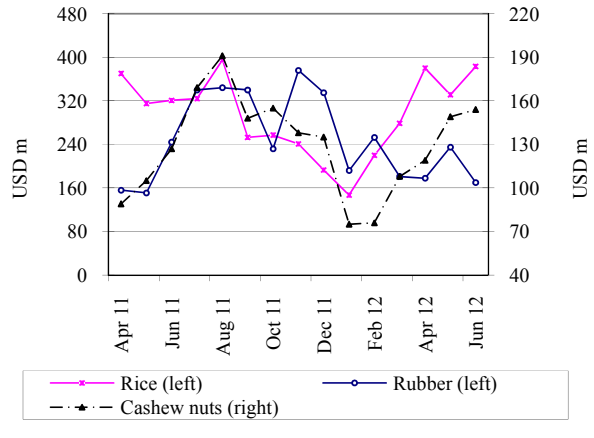
Source: General Statistics Office of Vietnam

**Thailand: Exports**  
April 2011–June 2012



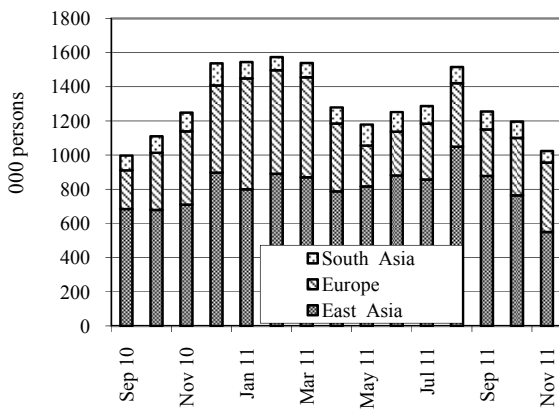
Source: Customs Department of Thailand

**Vietnam: Exports**  
April 2011–June 2012



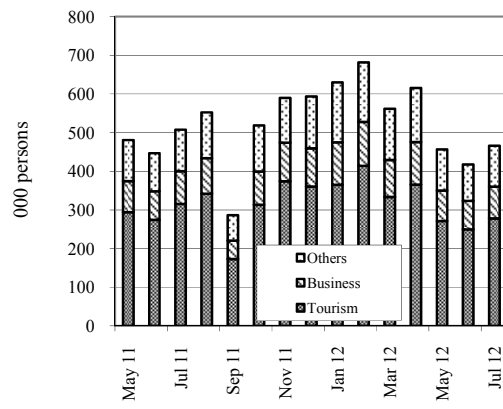
Source: General Statistics Office of Vietnam

**Thailand: International Arrivals**  
September 2010–November 2011



Source: Thailand Office of Tourism Development

**Vietnam: International Arrivals**  
May 2011–July 2012

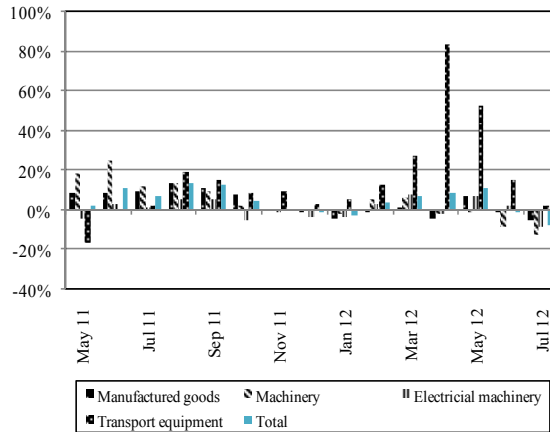


Source: Estimates by General Statistics Office of Vietnam

**សកម្មភាពសេដ្ឋកិច្ច និង អត្រាអតិផរណាសម្រាប់បណ្តាប្រទេសជាដៃគូរបស់កម្ពុជា**

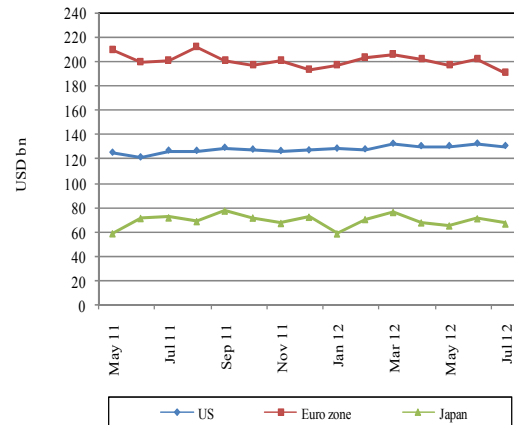
**Economic Activity and Inflation Rates of Selected Economic Partners of Cambodia**

**Year-on-Year Growth of Main Exports: Japan**  
May 2011–July 2012



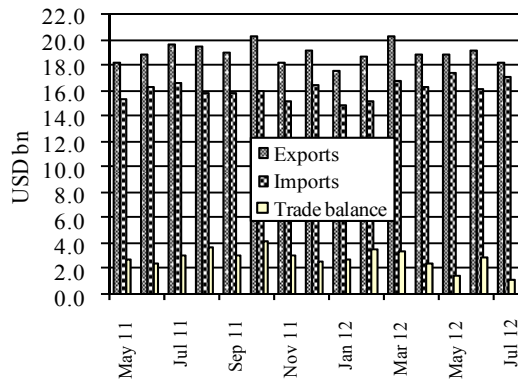
Source: Japanese Trade and Investment Statistics

**Goods Exports: US, Euro Zone & Japan**  
May 2011–July 2012



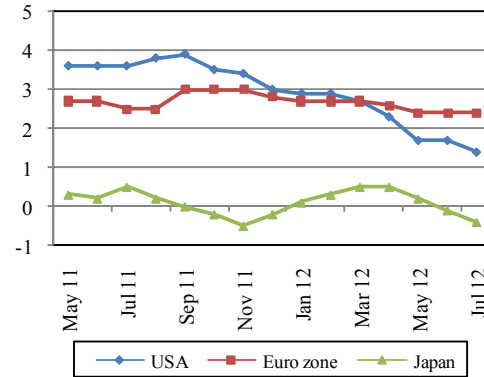
Sources: BEA, Eurostat and OECD

**External Trade: Malaysia**  
May 2011–July 2012



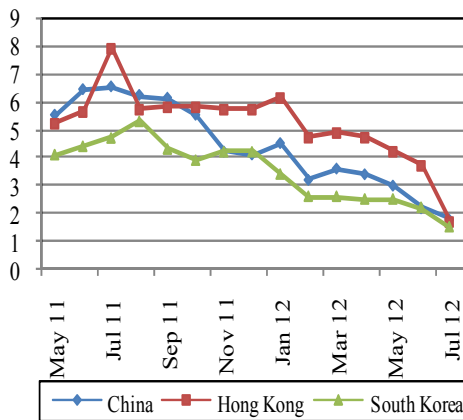
Source: Ministry of International Trade and Industry, Malaysia

**Inflation Rates: US, Euro Zone & Japan**  
(percent price change from a year earlier)



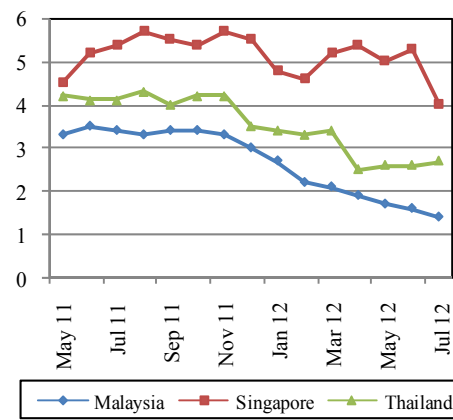
Sources: IMF and Economist (1 Sep 2012)

**Inflation Rates: China, Hong Kong & South Korea**  
(percent price change from a year earlier)



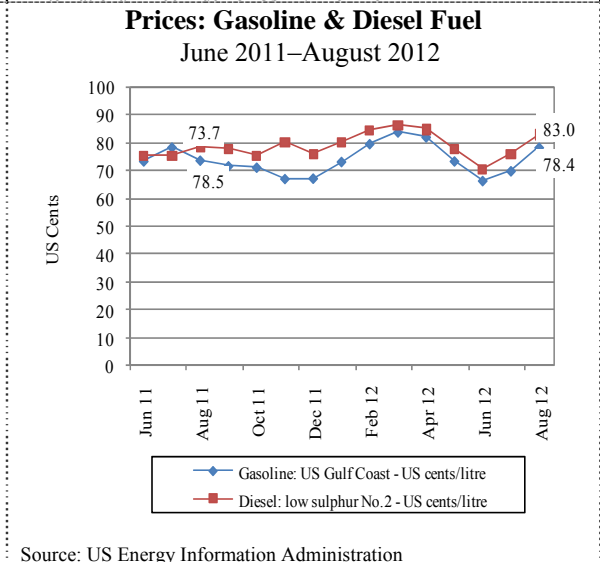
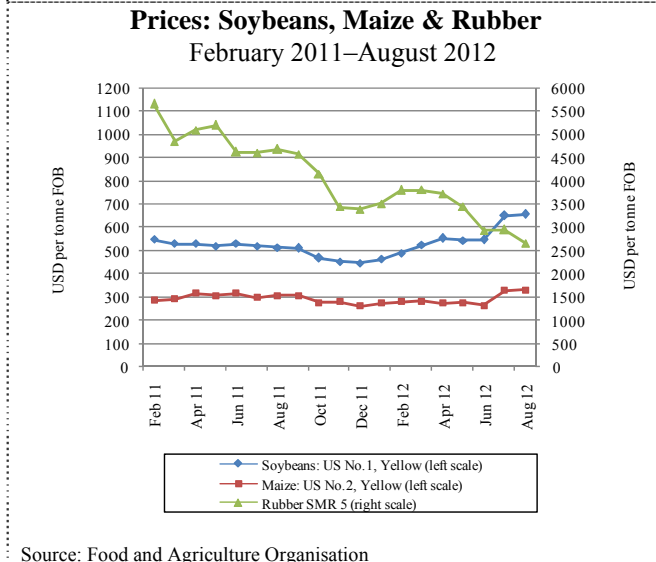
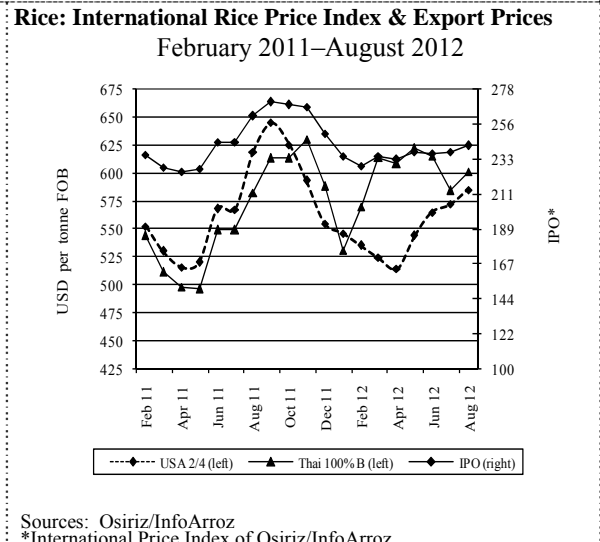
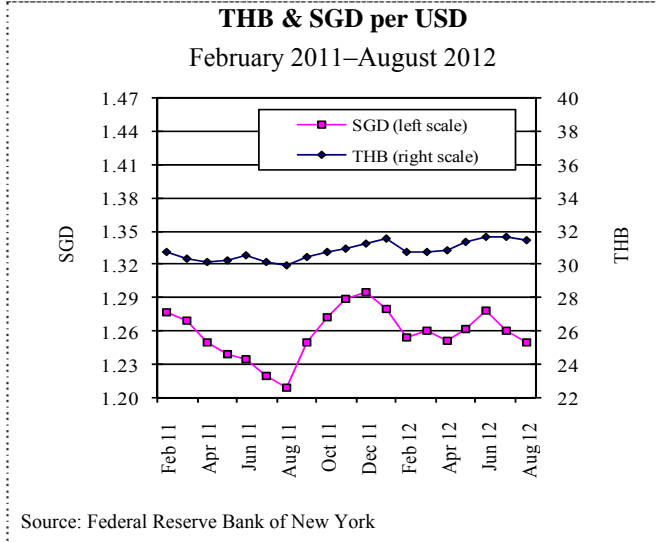
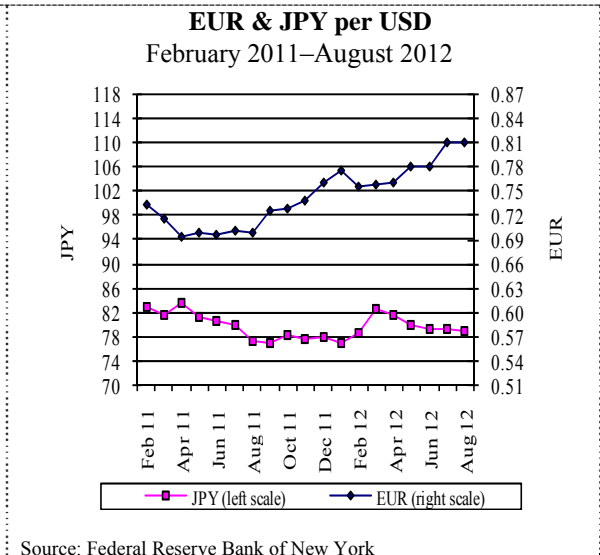
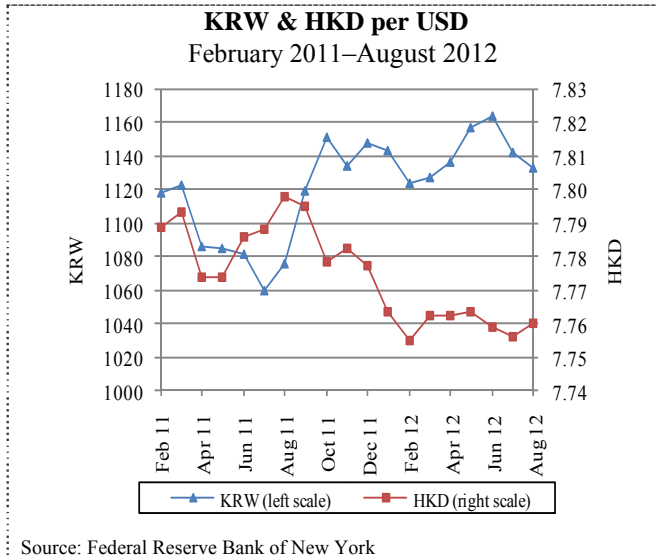
Sources: IMF and Economist (1 Sep 2012)

**Inflation Rates: Selected ASEAN Countries**  
(percent price change from a year earlier)



Sources: IMF and Economist (1 Sep 2012)

**អត្រាប្តូរប្រាក់ និង ស្ថានភាពផ្ទៃដីនិក្ខរលើទីផ្សារអន្តរជាតិ**  
**Exchange Rates and Commodity Prices in World Markets**



**ព័ត៌មានសេដ្ឋកិច្ច**  
**Economic News**

**ព័ត៌មានសេដ្ឋកិច្ចសំខាន់ៗ**

**កម្ពុជានាំចេញកៅស៊ូ ២២.៨៧៨តោន ក្នុងឆមាសទី១ ឆ្នាំ២០១២**  
តាមទិន្នន័យពីក្រសួងសេដ្ឋកិច្ច និងហិរញ្ញវត្ថុ កម្ពុជានាំចេញ  
កៅស៊ូ ២២.៨៧៨តោន ក្នុងឆមាសទី១ ឆ្នាំនេះ ឬកើន ១២,៩%  
បើធៀបនឹងរយៈពេលដូចគ្នាកាលពីឆ្នាំមុន។ ទោះយ៉ាងនេះក្តី តម្លៃ  
កៅស៊ូនាំចេញ បានធ្លាក់ចុះ ២៤,៤% មកត្រឹម ៧៤,៥លានដុល្លារ  
ដោយសារ ថ្លៃកៅស៊ូអន្តរជាតិបានធ្លាក់ចុះ។ នៅខែមិថុនា  
ថ្លៃកៅស៊ូអន្តរជាតិ បានធ្លាក់ចុះ ៣៦,៥% ធៀបនឹងមួយឆ្នាំមុន  
មកត្រឹម ២៩២៨,៣ដុល្លារ/តោន។ ប្រទេសអាស៊ាន ជា  
ទីផ្សារចម្បងសម្រាប់ការនាំចេញកៅស៊ូ។ ក្នុងរយៈពេលដដែល  
ការនាំចេញកៅស៊ូរបស់ប្រទេសវៀតណាម និង ថៃ បានធ្លាក់ចុះ  
៤,៩% និង ២៥,៩% រៀងគ្នា។

នៅឆ្នាំ២០១១ កម្ពុជា ផលិតកៅស៊ូស្ងួតបាន ៤៤.៩៦៩តោន  
ឬកើនឡើង ៧,១% ធៀបនឹងរយៈពេលដូចគ្នាកាលពីឆ្នាំ២០១០  
បើយោងតាមស្ថិតិពីក្រសួងកសិកម្ម រុក្ខាប្រមាញ់ និងនេសាទ។  
ផ្ទៃដីប្រមូលផលជ័រកៅស៊ូ កើន ១៧,៦% ធៀបនឹងកាលពី  
មួយឆ្នាំមុន ដល់ ៤៥.១៦២ហិកតា។

ការនាំចេញរបស់កម្ពុជា កើនដល់ ២,៥ពាន់លានដុល្លារ នៅ  
ឆមាសទី១ ឬកើន ១៣,៦% ពី ២,២ពាន់លានដុល្លារ នៅក្នុង  
រយៈពេលដូចគ្នាឆ្នាំមុន។ ការនាំចេញទៅសហភាពអឺរ៉ុប (EU) កើន  
២៨,៩% ដល់ ៧៨០លានដុល្លារ ទៅបណ្តាប្រទេសអាស៊ានកើន  
៦,២% ដល់ ១៥៥លានដុល្លារ ទៅប្រទេសជប៉ុនកើន ៣៨,១%  
ដល់ ៩០,៧លានដុល្លារ ទៅប្រទេសផ្សេងៗទៀតកើន ៣៨,៣%  
ដល់ ៥៣១លានដុល្លារ និង ទៅសហរដ្ឋអាមេរិកកើន ១,៩% ដល់  
៩៦៧លានដុល្លារ។

**Economic News Highlights**

**Cambodia exports 22,878 tonnes of rubber in the first six months of 2012**

Data from the Ministry of Economy and Finance show that Cambodia exported 22,878 tonnes of rubber in the first six months of this year, a 12.9 percent increase from the same period last year. However, the value of rubber exports dropped by 24.4 percent to USD74.5 m, due to the decrease in the international price of rubber. In June, the price declined by 36.5 percent year on year to USD2928.3/tonne. ASEAN countries are the major markets for rubber exports. In the same period, the value of rubber exports of Vietnam and Thailand also decreased by 4.9 percent and 25.9 percent, respectively.

In 2011, Cambodia produced 44,969 metric tonnes of dried rubber, representing a 7.1 percent rise from 2010, according to the Ministry of Agriculture, Forestry and Fisheries. Tapping areas increased by 17.6 percent from a year earlier to 45,162 ha.

Cambodia's total exports reached approximately USD2.5 bn in the first six months, a 13.6 percent rise from USD2.2 bn in the same period last year. Exports to the EU rose by 28.9 percent to USD780 m, to ASEAN countries by 6.2 percent to USD155 m, to Japan by 38.1 percent to USD90.7 m, to other countries by 38.3 percent to USD531 m and to the US by 1.9 percent to USD967 m.

**Links to others economic news**

- 1. "IMF: Cambodia's economy expected to grow 7 pct in 2012"  
[http://news.xinhuanet.com/english/business/2012-10/02/c\\_131885405.htm](http://news.xinhuanet.com/english/business/2012-10/02/c_131885405.htm)
- 2. "Cambodia to levy economic land concessions tax"  
[http://news.xinhuanet.com/english/world/2012-09/28/c\\_131880215.htm](http://news.xinhuanet.com/english/world/2012-09/28/c_131880215.htm)
- 3. "Address at the Launching of the Tourism Strategic Development Plan 2012 – 2020"  
[http://www.cnv.org.kh/2012\\_releases/20sep12\\_tourism\\_NSDP\\_launch\\_speech.html0](http://www.cnv.org.kh/2012_releases/20sep12_tourism_NSDP_launch_speech.html0)