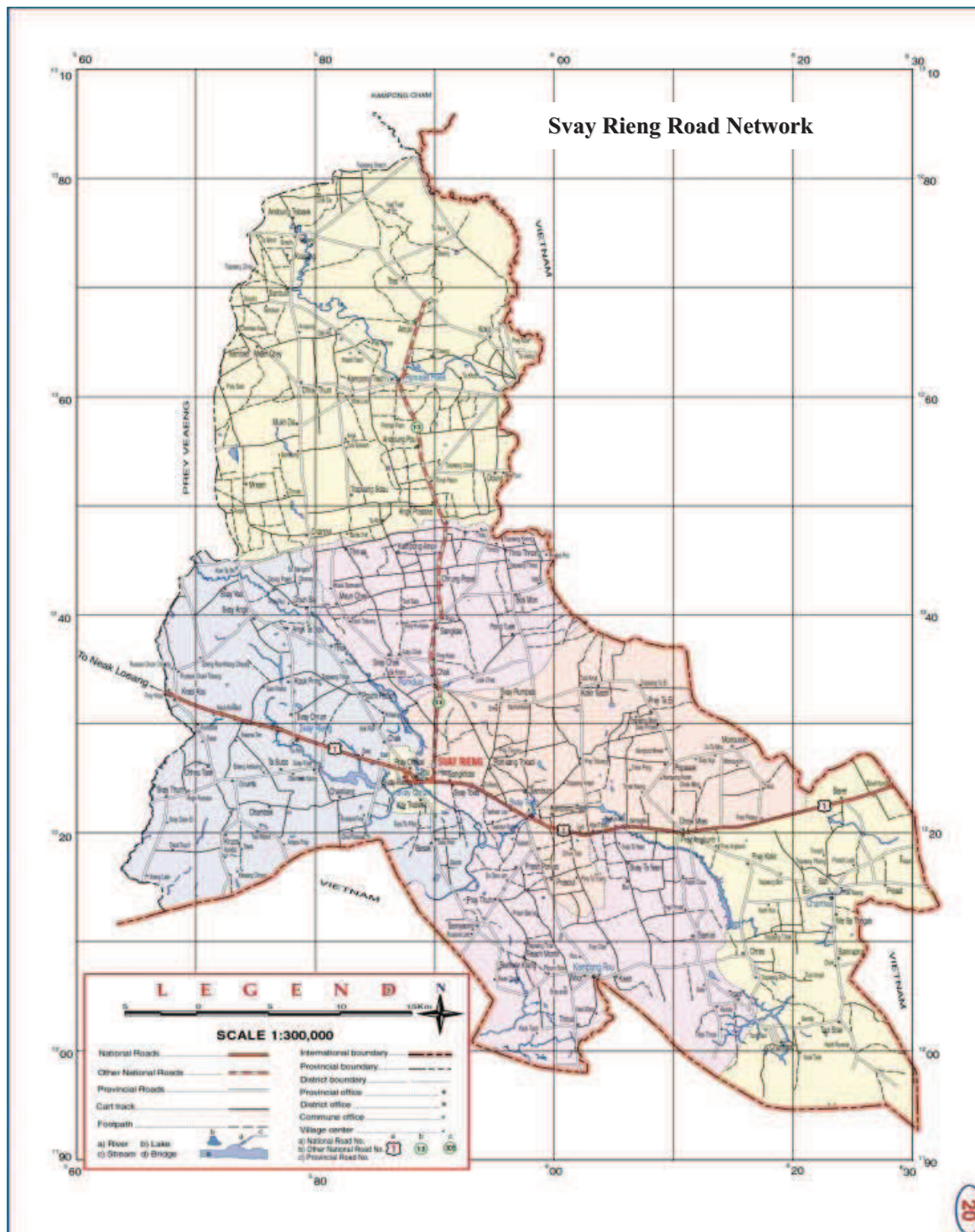


Svay Rieng Province



I. Introduction to the Province

Svay Rieng is located in southeast Cambodia along National Road No. 1, which is the part of the ASEAN Highway, 125 km from Phnom Penh and only 60 km from Ho Chi Minh City, Vietnam.

The province shares a border with Prey Veng to the west and north, and two provinces of Vietnam (Tay Ninh to the east and Long An to the south). There are two international crossings with Vietnam, namely Barvet-Mokbay in Barvet City and Prey Lavea-Ben Heap in Kampong Ror District

Svay Rieng has great potential for business development from the private sector at both the domestic and international level. With its geographic advantages, the province has promoted industrial development through the establishment of three Special Economic Zones (SEZs), namely the Manhattan SEZ and Tai Seng SEZs, which are currently in operation, and the Dragon King SEZ that is currently under development. Many light manufacturing factories have moved to these SEZs and begun operation.

A good business registration system under the investment sub-committee and secretariat, which is one the most efficient in Cambodia, an abundant young labor force from the provincial universities, and a reliable electricity supply have all contributed to ensuring business operations in the province.

Moreover, the food processing industry can also be promoted through the rich agricultural resources and strategic location for international trade of the province.

II. Overview of the Province

Provincial Capital	Svay Rieng
Total area of the Province	2,848.85 km ²
Landscape	Plain area
Total Population	579,015 persons
Population Density	203 persons/km ²
Population age over 18years	359,068 persons (Men: 168,451, Women: 190,617)
Temperature	24 °C - 35 °C (Average: 29 °C)
Rainfall	1,600 mm/year
Administrative Boundary	Number of cities: 2 Number of districts: 6 Number of sangkats: 12 Number of communes: 68 Number of villages: 690
Adults with literacy	242,596 persons (Men: 123,193, Women: 119,403)
Provincial Border	East: Tay Ninh Province of Vietnam West: Prey Veng Province North: Prey Veng Province South: Long An Province of Vietnam
Number of Establishments	Number by size 1-10 (persons) 14,750 11-50(persons) 248 51-100 (persons) 24 101 or more 32 Total 15,054

III. Infrastructure

Electricity	Total Supply Amount	24.5 MW
	EDC	24 MW (Import from Vietnam 23 MW)
	IPP	0.5 MW
	Major power plant	2 power plants with capacity of 1.5 MW
	Major transmission line	MV network= 22 KV and LV=0.4 KV
Water	Supply amount	1,200,000 m ³ /year
	Major water supply plant	5 major water supply plants (Total production capacity: 950,000 m ³ /year)
Transportation	Vehicles (car, bus, truck and motorcycle)	
Road	1 digit national roads	Total: 65 km (1NR of 1 digit)
	2 digit national roads	Total: 58.5 km (1 NR of 2 digit)
	Provincial (3digit) roads	Total: 521.7 km (71 provincial roads)
	Rural roads	Total: 2,430 km (463 rural roads)
	Total length	3,075.2 km
Rail road	None	
Airport	None	

Port	Dry Port	So Nguon Dry Port in Barvet
	Sea Port	None
	River Port	None
International Check Points	There are two international check points. 1) Barvet-Mokbay in Barvet City 2) Prey Lavea-Ben Heap in Kampong Ror District	

IV. Investment

1) Special features or strong points for the Province in terms of investment

<ul style="list-style-type: none"> ➤ Advantageous location between Phnom Penh and Ho Chi Minh through National Road No.1, which is part of the ASEAN Highway. ➤ More than 1,000 graduates annually from provincial universities ➤ Home to active Special Economic Zones near the Cambodia-Vietnam border of Barvet, 160 km from Phnom Penh and 60 km from Ho Chi Minh City International Sea Port ➤ Cheap and sufficient electricity supply. ➤ Two international crossing-points ➤ Tourist attractions such as casinos, hotels, and recreation sites with more than 670,000 tourists passing through each month.
--

2) Investment opportunities or potential sector

<p>Agriculture: 202,454 ha of cultivatable land with 91.15% of the provincial population engaging in agriculture.</p> <p>Processing Industry: The province promotes processing industries such as international standard rice-milling facilities and plants processing tapioca and sugar cane.</p>
--

3) Approved QIP by Provinces-Municipalities Investment Sub-committees (PMIS)

Name	Share	Location	Investment Capital (USD)	Date of Approval
Svay Rieng (Cambodia) Garment	70% USA, 30% Vietnam	Sangkat Chrook Mates, Barvet city	1,176,050	04/07/2005
NISSIN LOTUS Garment	100% Japan	Sangkat Chrook Mates, Barvet city	557,600	23/09/2011

4) SEZ in the Province

Manhattan SEZ	
Location	Ta Bec village, Sangkat Barvet, Barvet city, Svay Rieng Province
Land area	175 ha
Project Status	Begun operation since 2006
Facilities	17 factories and more under construction
Developer	Manhattan International Co., Ltd (Taiwan)
Tai Seng SEZ	
Location	Ta Bec village, Sangkat Barvet, and Prey Pdao village, Sangkat Chrook Mates, Barvet city, Svay Rieng Province
Land area	130 ha
Project Status	Begun operation since 2008
Facilities	08 factories and more under construction
Developer	Tai Seng Bavet SEZ Co., Ltd
Dragon King SEZ	
Location	Ang Sala village, Sangkat Prey Ankunh, Bavet city, Svay Rieng province
Land area	120 ha
Project Status	Under development
Facilities	N/A
Developer	Dragon King Special Economic Zone Co., Ltd

V. Industry

1) Current Major Industries

Strategic location linking Phnom Penh and Ho Chi Minh City, as well as containing SEZs to attract manufacturing industries, mainly light manufacturing, to invest in the province:	
<ul style="list-style-type: none"> ➤ Garment and textiles industry ➤ Mattress manufacturing ➤ Packaging ➤ Small rice-milling facilities 	<ul style="list-style-type: none"> ➤ Shoe and glove factories ➤ Bicycle assembly ➤ Souvenir manufacturing

2) Priority Industries to be Promoted

- Modern large and small rice-milling facilities.
- Garments and textiles.
- Construction materials.

3) Reasons or Measures for Promotion of the Priority Industries

- Surplus paddy rice being exported to Vietnam without gaining value-addition from processing.
- The province is a major base for Special Economic Zones in the country.
- Shortage of raw materials and construction materials to meet development demand.

4) Economic Land Concessions related to Agro industry in the Province

Company Name	Country	Location	Size (ha)	Purpose of Investment
An Mardy Group	Cambodia	Trors and Korki Communes, Ror Meashek District	3,610	Rubber
N.K Venture (Cambodia)	India	Korki and Ambil Communes, Ror Meashek District	1,200	Cane

VI. Natural Resources

1) Agriculture

➤ Agricultural land and cultivated area: Total & by crop

Name of Crop	Cultivated area (ha)	Yield (ton/ha)	Total Production (ton)
Rice Paddy (Dry + Wet)	183,761	2.74	504,807
Subsidiary and industrial crops	17,543	15	263,145
Fruit and permanent crops	1,150	17	19,550
Total	202,454	3,889	7,875,021

➤ Irrigation area

Natural water reservoirs	10 reservoirs with total storage capacity between 5,000,000 to 7,000,000 m ³
Irrigation Line	37 lines with total length of 561,278 m
Sub-irrigation line:	11 lines with total length of 30,705 m

➤ Major crops: Rice, fruits, vegetable, etc.

Type of Crop	Cultivated Area (ha)	Production Amount (ton)
Maize	153	383
Cassava	13,545	245,906
Sweet Potato	167	1,336
Vegetables	1,681	15,129
Sugar Cane	1,788	13,410

➤ Rubber

Total: 3,610 ha
Harvesting latex of rubber tree has not yet begun.

➤ Provincial specialized fruit and product

None

2) Forestry

Forestry area:	Total area: 15,709 ha
Wildlife sanctuary and protected area	1,150 ha

3) Main minerals production and mining area

Name of Mineral	Production Amount	Mining Area
Mud coal	Under the study	Champuste area, Tuol Sdey Commune, Chantrea District

4) Fishery

➤ Major Fishery Product

Type of Fish	Production Amount
Freshwater fish	40tons/year
Saltwater fish	None

➤ **Aquaculture Productions**

Type of Product	Production Amount
Cattle	280,345 heads
Pig	155,476 heads
Chicken and duck	1,201,564 heads

5) Tourism

➤ **Historical/cultural area**

Name	Appeal points
Prey Basak Resort	Prey Ba Sake, located 8.5 km from the provincial capital, contains the ruins of ancient temples in a deep forest.
Chi Hor Temple	This temple was built more than 1,000 years ago and is surrounded by thick forest.

VII. Cost of Doing Business

1) Real Estate

➤ **Land**

Category	Sub-Category	Price (USD /m ²)
Industrial Land	First Industrial land	25
	Second Industrial land	15
	Third Industrial land	10
Commercial Land	First commercial land	150
	Second commercial land	125
	Third commercial land	75
Residential Land	First residential land	250
	Second residential land	50
	Third residential land	30

2) Manpower Cost

Category	USD/Month	Riel/Month
Skilled worker	120-150	480,000-600,000
Unskilled worker	61-80	244,000-320,000
Technician	150-180	600,000-720,000
Engineer	500-1,000	2,000,000-4,000,000
Middle management	500-1,000	2,000,000-4,000,000

3) Utility Cost

Category	Sub-Category	Price
Electricity	EDC: For general customers	650Riel/Kwh
	EDC: for governmental institution	650Riel/Kwh
	EDC: for diplomacy, foreign residence, industry and service	470Riel/Kwh
	IPP: for general customer	3,000R/Kwh
Water cost		1,200-2,100 Riel/m ³
Gas tariff	For domestic use	18 USD/15kg
	For industrial use	18 USD/15kg
Fuel cost	Premium petrol	5,000 Riel/L
	Regular petrol	4,800 Riel/L
	Diesel	4,600 Riel/L

VIII. Living Environment for Expatriates

1) Major Hotels/ Guesthouses

Name / Location	Type of Room	Rate/night (USD)
Las Vegas Sun Hotel & Casino (4 stars)		
Address: National Road 1, Bavet City, Chantrea District, Svay Rieng Telephone: +855(0)44945045, 044715205, Fax: +855(0)44946070 Email: lasvegas-sun@daum.net Website: www.lasvegas-sun.com	Standard	58
	Executive	66
Waiko River Hotel		
Address: Mephleung Village, Sangkat Svay Rieng, Svay Rieng City, Svay Rieng Telephone: +855(0)44945718, 011736612	Single Room	20
	Deluxe Rom	25
Santepheap Guesthouse		
Address: Rong Banle Village, Sangkat Svay Rieng, Svay Rieng City, Svay Rieng Telephone: +855(0)11792585, 077581958	Room with Fan	5
	Room with A/C	10
Sopheak Mongkul Guesthouse		
Address: No. 22, St. 18, Rong Banle Village, Sangkat Svay Rieng, Svay Rieng Telephone: +855(0)11776687, 012664646	Room with Fan	5
	Room with A/C	10

2) Branches of Financial Institutions

Commercial Bank	➤ Canadia Bank Plc.	➤ Cambodia Public Bank Plc.,
	➤ Aceda Bank Plc.	
Specialized bank	None	

3) Major Hospitals/ Clinics

Svay Rieng Hospital	
Opening hour	24 hour
Contact number	044 715 373/ 012 953 975
Address	Sangkat Svay Rieng, Svay Rieng City, Svay Rieng Province
Saravoan Clinic	
Opening hour	6:00 to 19:00
Contact number	011 952 400/ 012 926 575
Address	Meplueng village, Sangkat Svay Rieng, Svay Rieng City,

4) Education (International school)

None

IX. Contact Person for Investment Matters in the Province

Name: Mr. Eng Sovann Position: Secretary of Investment Sub-Committee of Svay Rieng Province Contact number : 012 928 902/ 016 654 520
--